

Moodle Tutorial



Co-funded by the
Erasmus+ Programme
of the European Union



Índice

Introduction: What is Moodle	2
Moodle's interface	4
Registration and Login to Moodle	5
Courses Access	5
Types of Moodle toolkits.....	6
Navigation	7
Participants	7
Grades.....	8
Figure 1: Moodle Configuration	3
Figure 2: Moodle Interface	4
Figure 3: Moodle Pages	4
Figure 4: Moodle authentication interface	5
Figure 5: Different Access.....	5
Figure 6: Navigation Menu	7
Figure 7: Participants sorted alphabetically	7
Figure 8: Evaluation Topic with the different activity ratings	8

Introduction: What is Moodle

Moodle (Modular Object-Oriented Dynamic Learning Environment)

Moodle is a software that allows the creation and management of courses in online environments. We can call this type of web-based software a Course Management System (CMS), whose main advantages lie in the premise of teaching "anytime, anywhere", meaning that students can access course materials

students can access educational content at a time that is convenient to them, from anywhere. at their convenience, from anywhere in the world, through a simple browser such as Internet Explorer or Mozilla Firefox. Firefox.

Moodle is a dynamic, object-oriented, virtual teaching-learning environment.

According to the official documentation, the word Moodle can also be understood as a verb meaning a process of making things, as they are needed, leading to things as they are needed, thus leading to a development in the way a student or teacher student or teacher can approach studying or teaching in an online course. online course.

An LMS (Learning Management System) such as Moodle allows the teacher and students to take a much more active role in the teaching-learning process a LMS (Learning Management System) such as Moodle allows the teacher and students to take a much more active role in the teaching-learning process by providing tools for students to communicate with each other synchronously and asynchronously; submit assignments electronically; grade each other electronically; evaluate each other; collaborate as a group to complete assignments; take online tests and answer quizzes.

Moodle is organized into three main levels: a general level for access and configuration, followed by a course grouping access and configuration level, followed by a level of grouping courses by categories (every course must belong to some category), and by level of courses (also called courses)

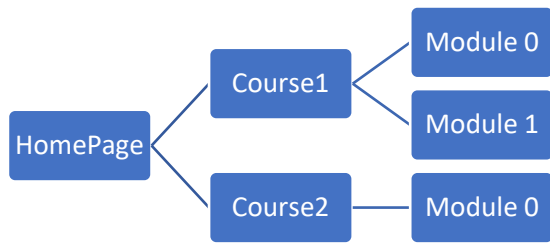


Figure 1: Moodle Configuration

Moodle's interface



Figure 2: Moodle Interface

Although the home page (and many others) can be configured to change the color scheme and some graphical details, there is a basic layout associated with Moodle pages. This layout is based around four main areas which are divided into the top of the screen, the left column, the middle column middle column and the right column. This is depicted in Figure 3: Moodle Pages, which was created from Figure 2: Moodle Interface

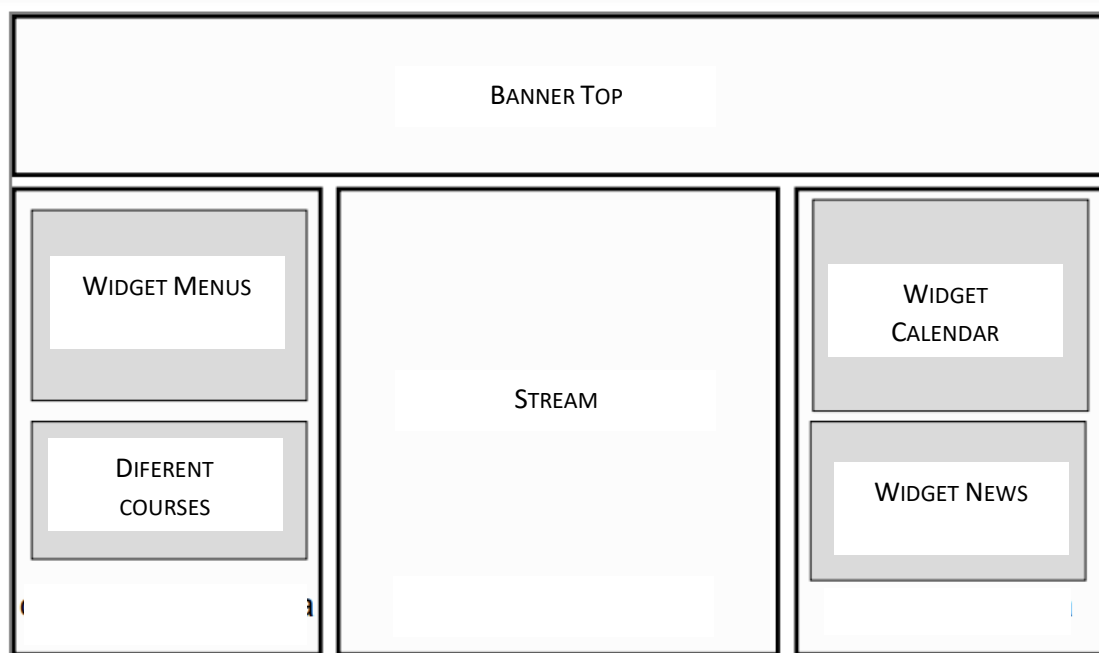


Figure 3: Moodle Pages

Registration and Login to Moodle

To be able to access the configuration commands you must necessary to be registered in the system. This can be done by clicking on the word "Login" that usually appears in the upper right (Figure 2: Moodle Interface), or lower left, corner of each page Figure 4: Moodle authentication interface).

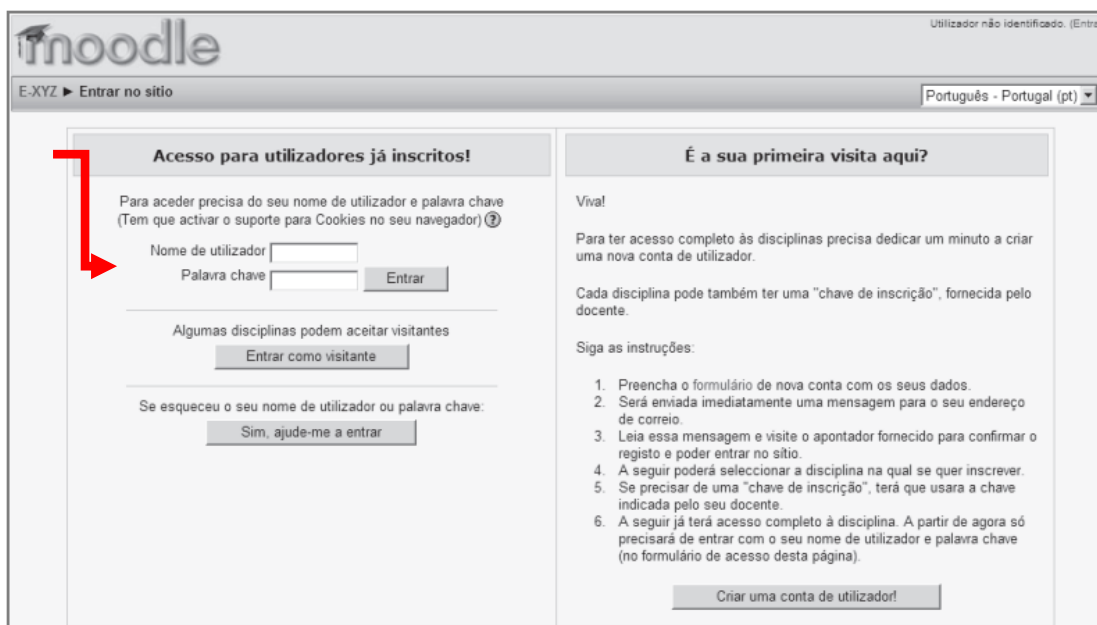


Figure 4: Moodle authentication interface

Courses Access

It is possible to have various levels of access to courses. In order to assist in this process of learning what type of access is allowed for a particular course, Moodle provides a set of icons to distinguish between the various situations.




ÍCONE	FUNÇÃO
	COURSE INFORMATION
	GUEST ACCESS IS ALLOWED
	REQUIRED ACCESS KEY (OR ENROLMENT KEY)

Figure 5: Different Access

Types of Moodle toolkits

Moodle allows you to publish online publishing of four types of material without interactivity:

- Text page;
- Web page;
- Link to some file on the web (i.e. a URL);
- Text and/or image tag.

The basic version of Moodle provides six types of material interactive learning material:

- Paper submission;
- Online quiz;
- Referendum;
- Lesson (chained presentation of content with transition questions between content content);
- Survey;
- Exercise (test that has to be self-assessed).

In addition to these activities, there are five eminently social activities in where students must interact with each other:

- Chat (synchronous conversation);
- Forum;
- Glossary;
- Wiki;
- Workshop.

So, there are four types of static and eleven interactive learning materials, of which of which five are intended to facilitate collaborative and social activities.

Navigation

In the right column, we can see not only the students and teachers of the class, but also the evaluations of the different activities

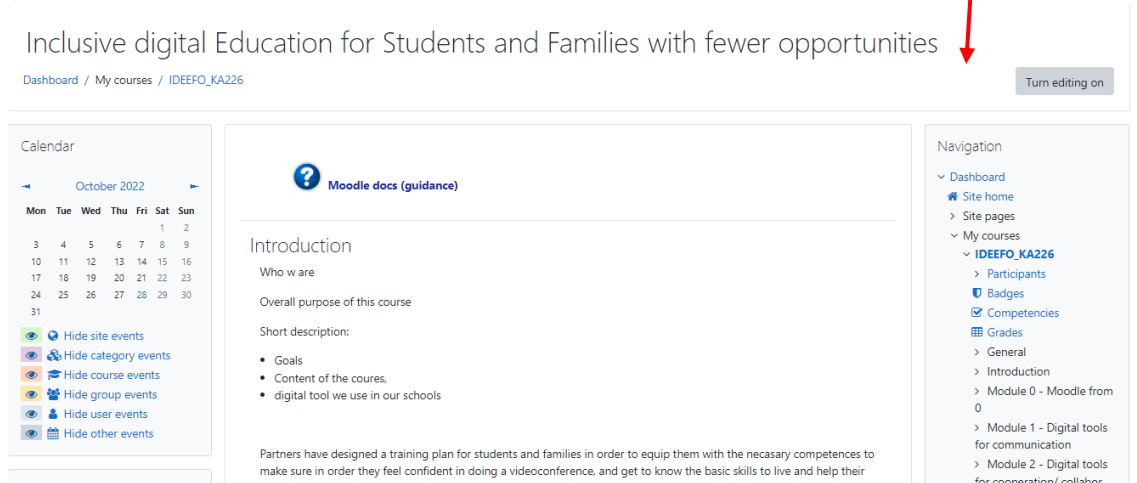


Figure 6: Navigation Menu

Participants

By clicking on the participants, the list with the participants appears, as shown in the picture.

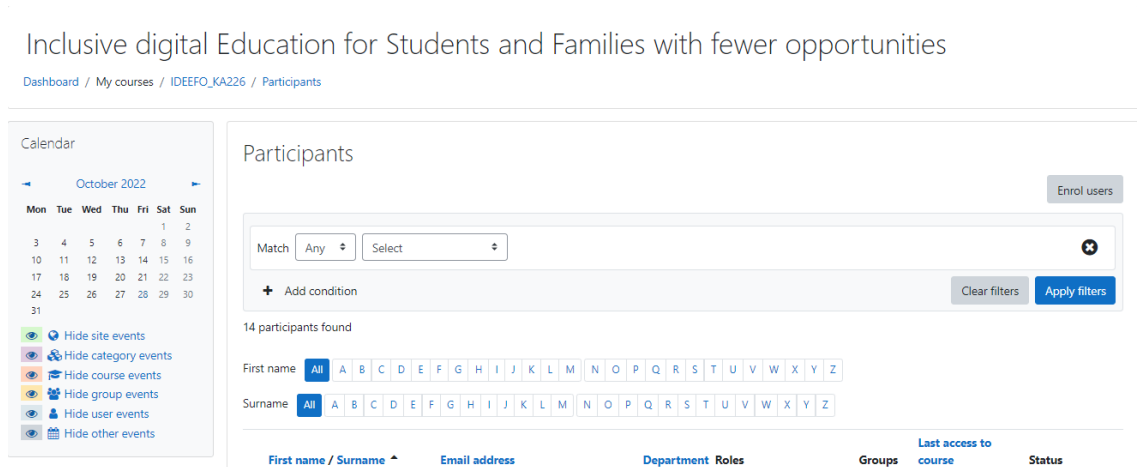


Figure 7: Participants sorted alphabetically

Grades

To follow the evaluation of the different activities, you can consult in the same navigation menu the topic "grades", and access the respective ratings.

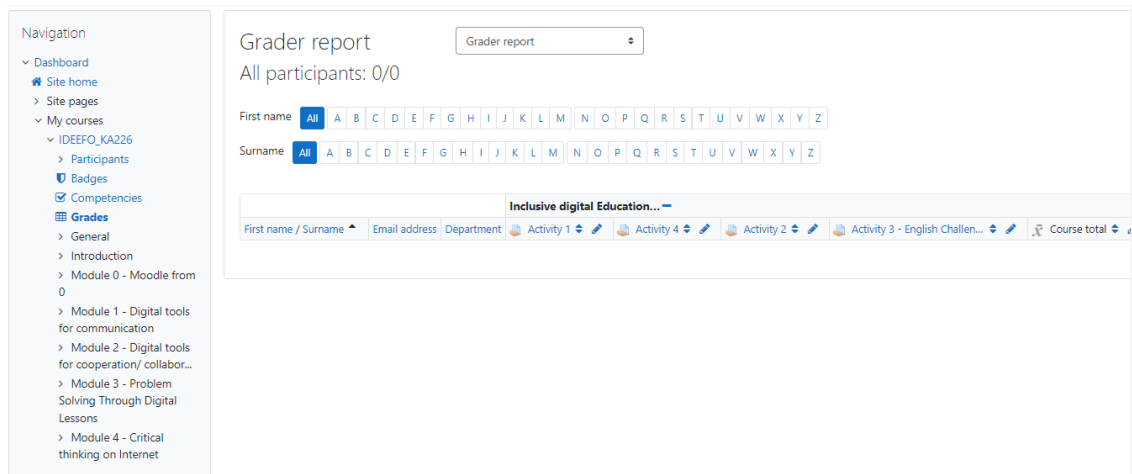


Figure 8: Evaluation Topic with the different activity ratings

Any additional questions, you can always check out this complete Moodle tutorial.

Video tutorial for teachers: <https://www.youtube.com/playlist?list=PLd-QtXnha0KcZoD8CqIbLg3I11Vptvfnc>

Video tutorial for students: <https://www.youtube.com/watch?v=0JMWDO2SeyY&list=PLd-QtXnha0Kdf6UXJONXA6QbNFK1xIlr8>