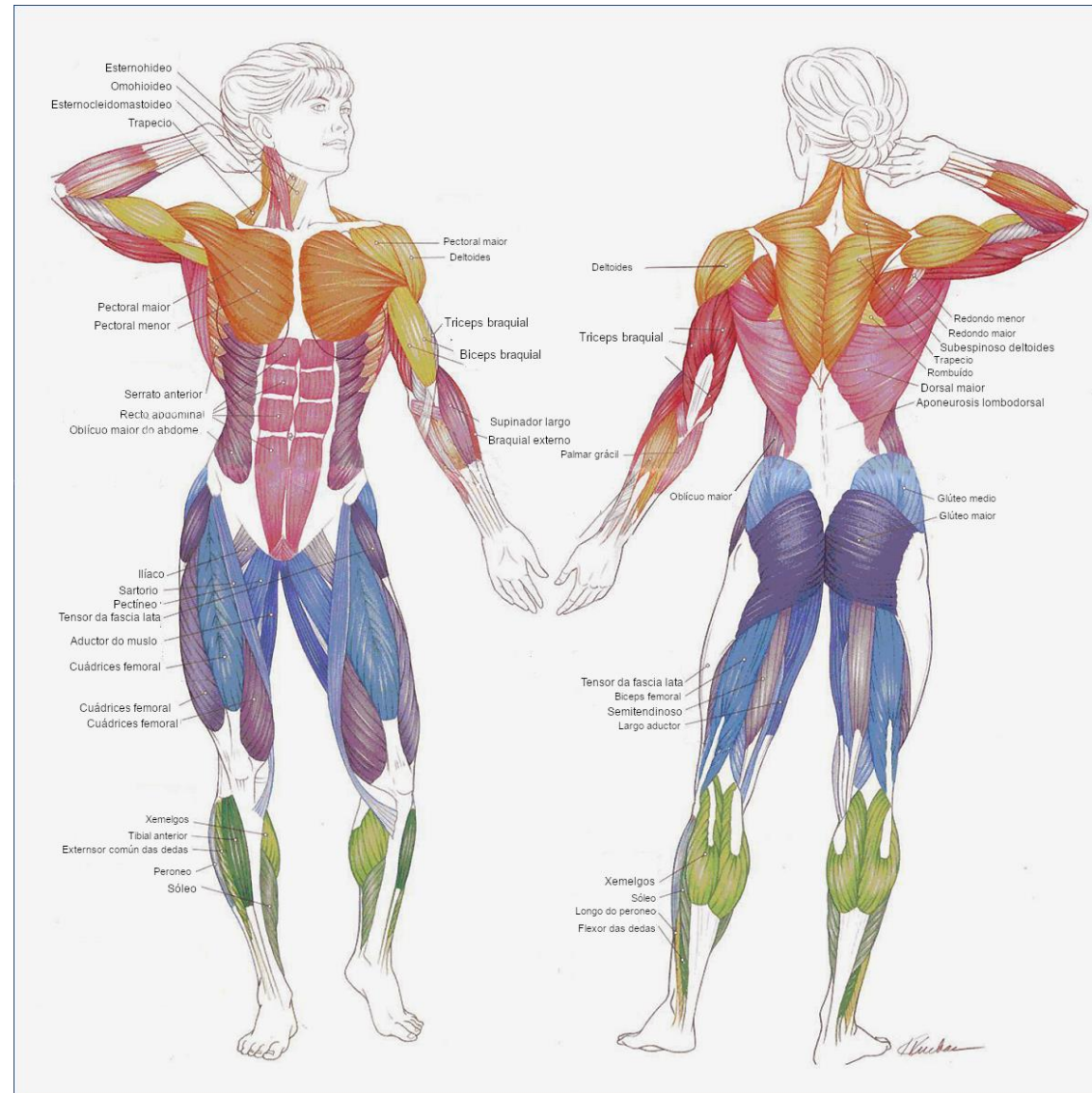


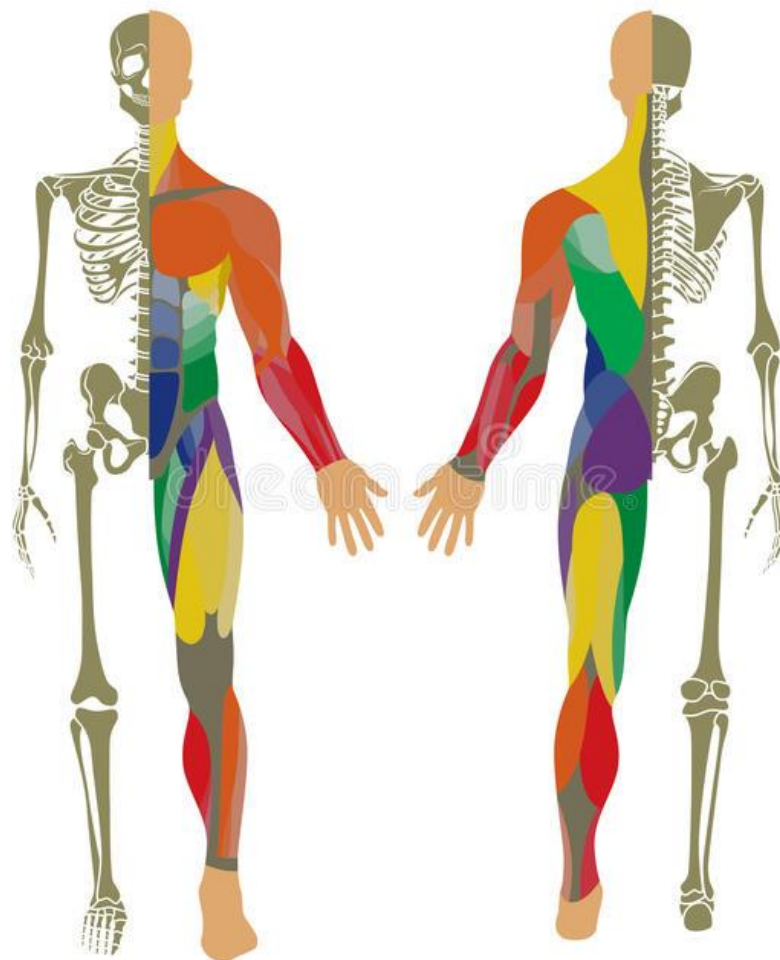
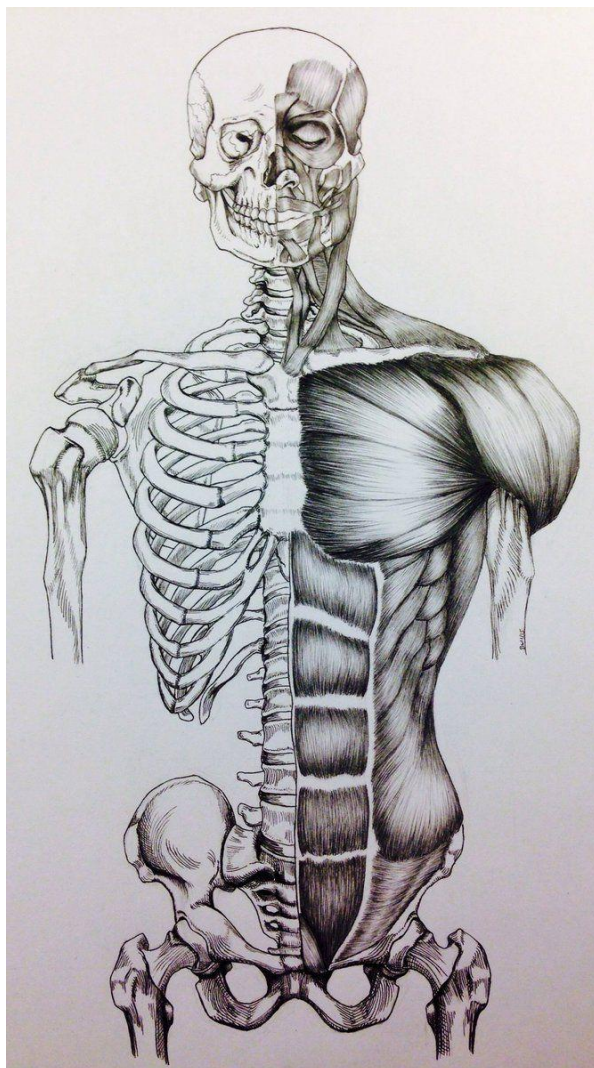
Anatomía humana e animal



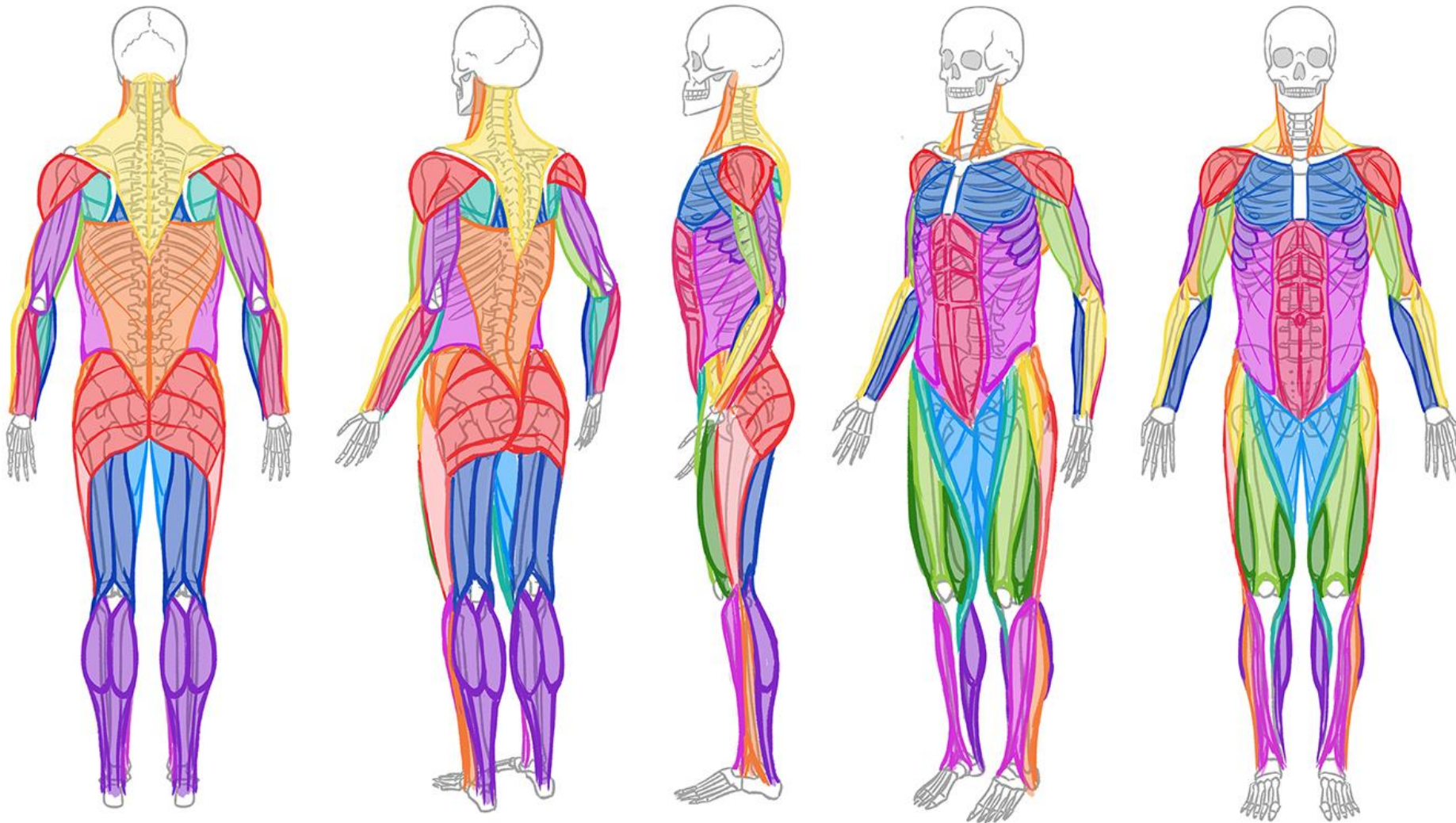
Principais músculos superficiais do corpo humano



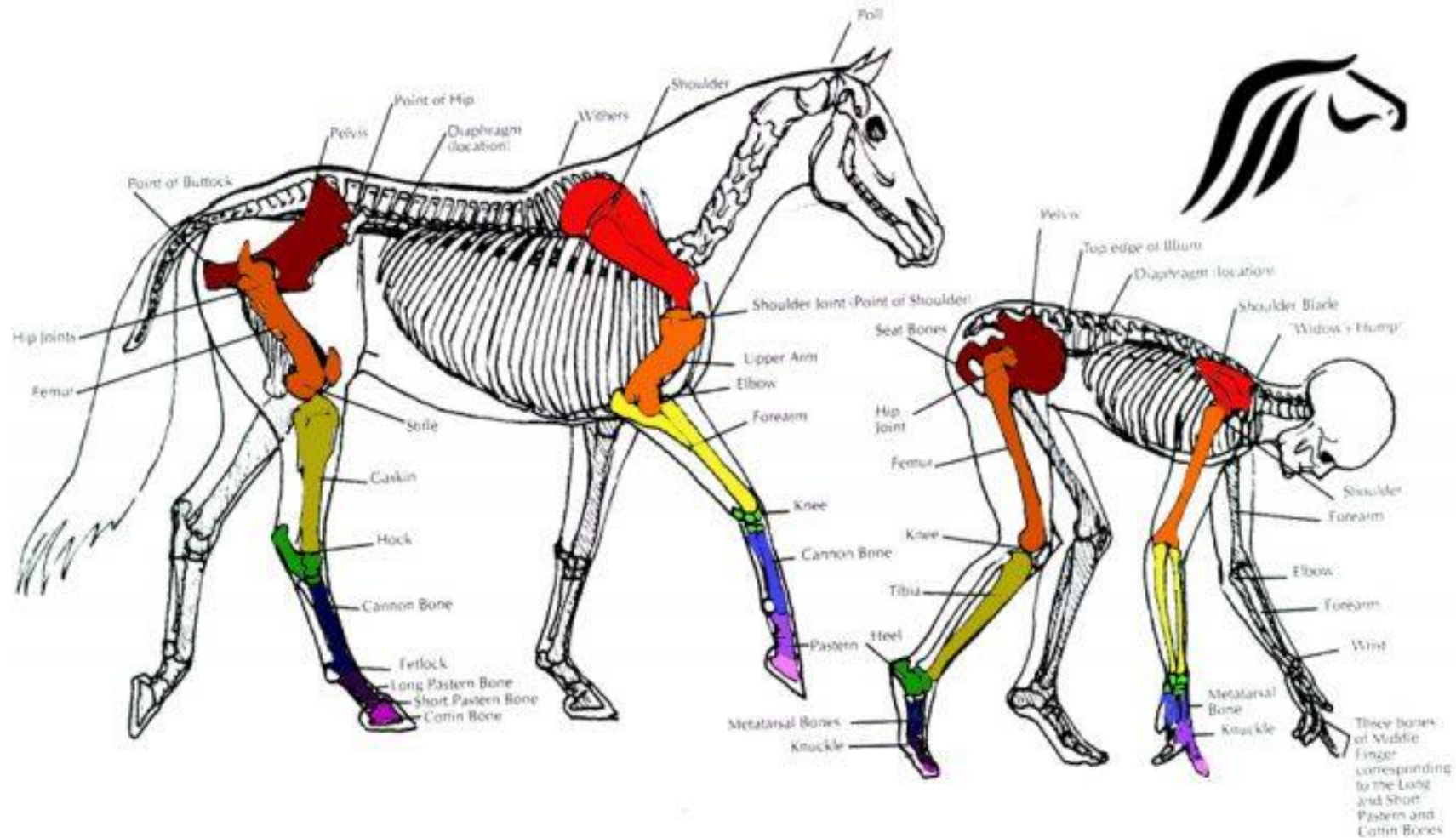
Inserción da musculatura no esqueleto



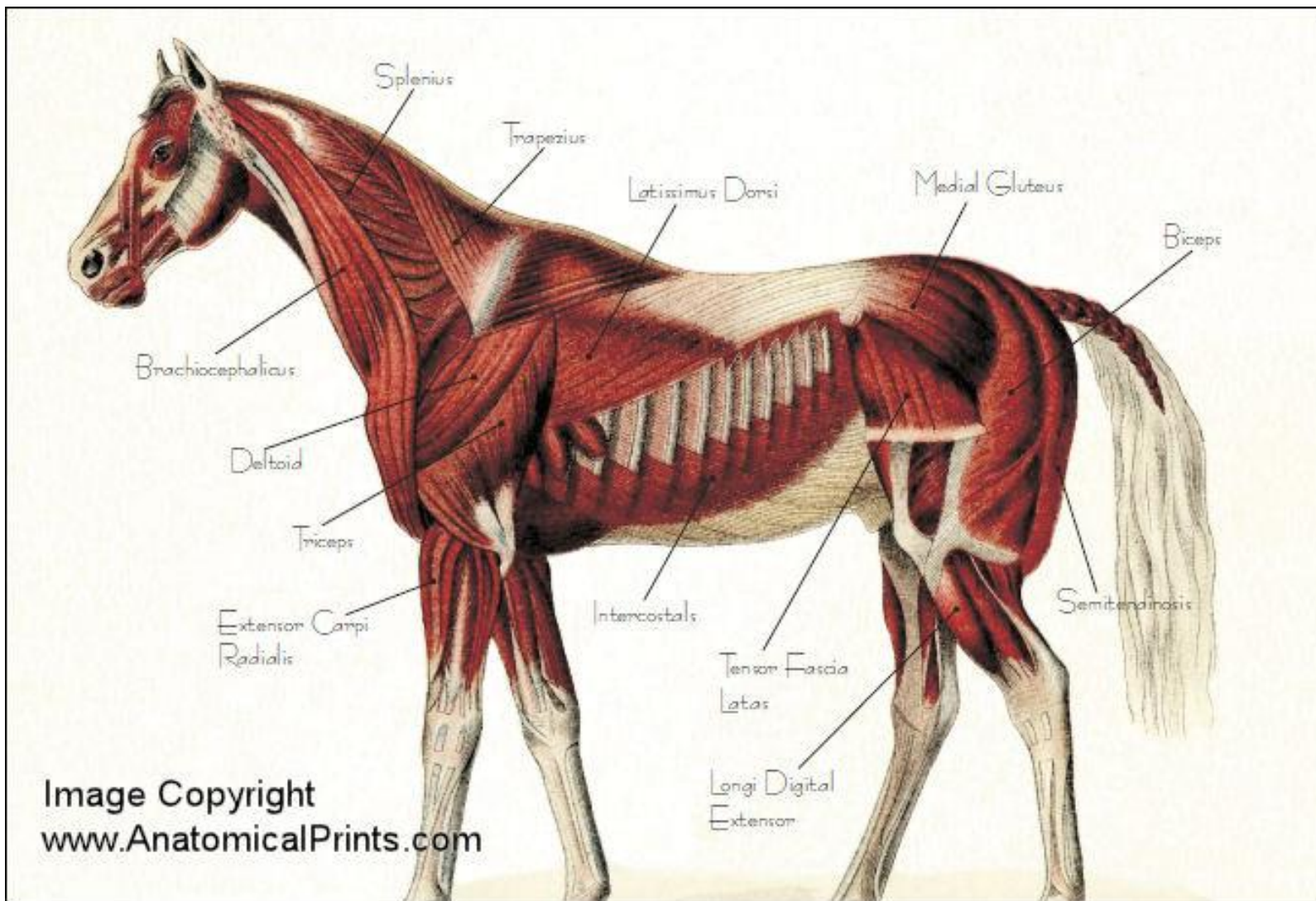
Realación do esqueleto coa mioloxía



Comparación de anatomías

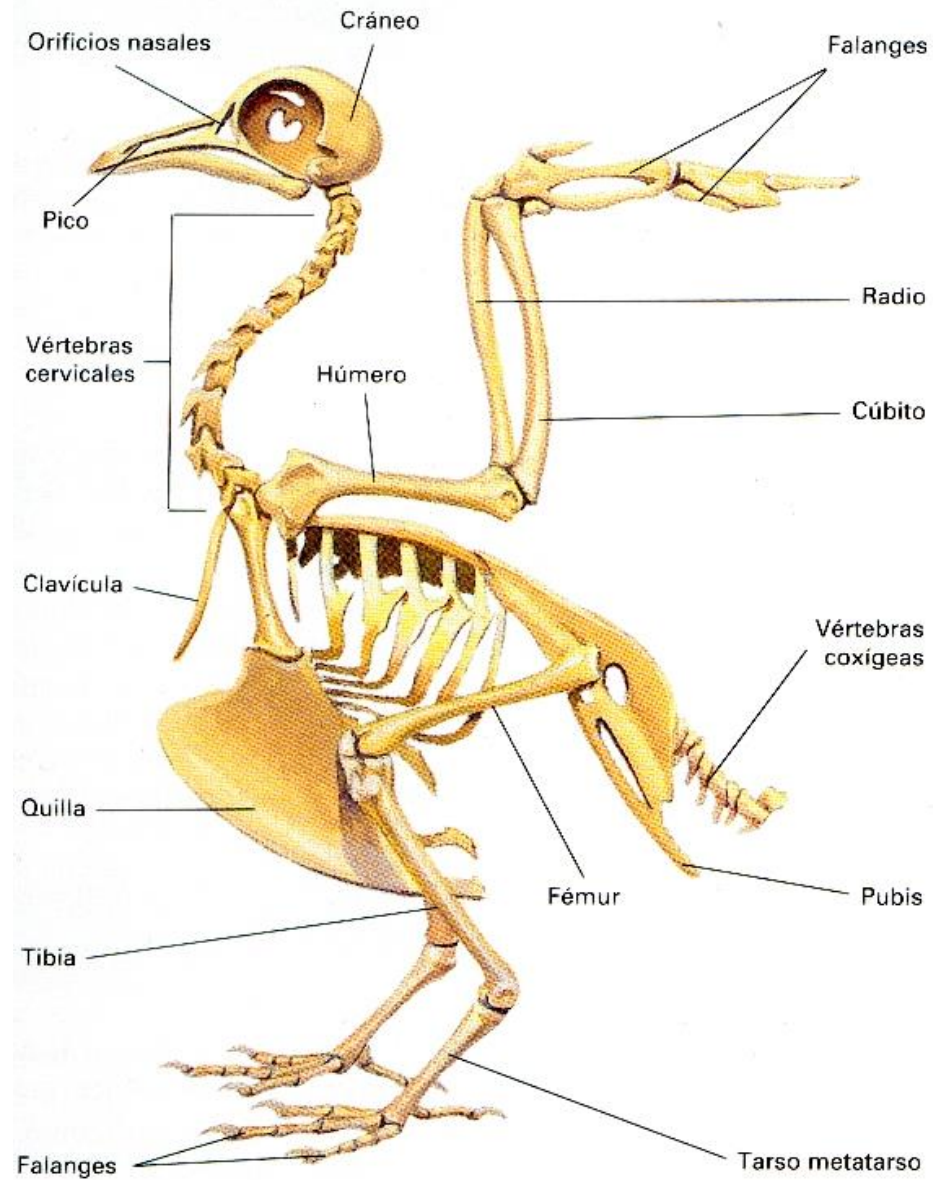


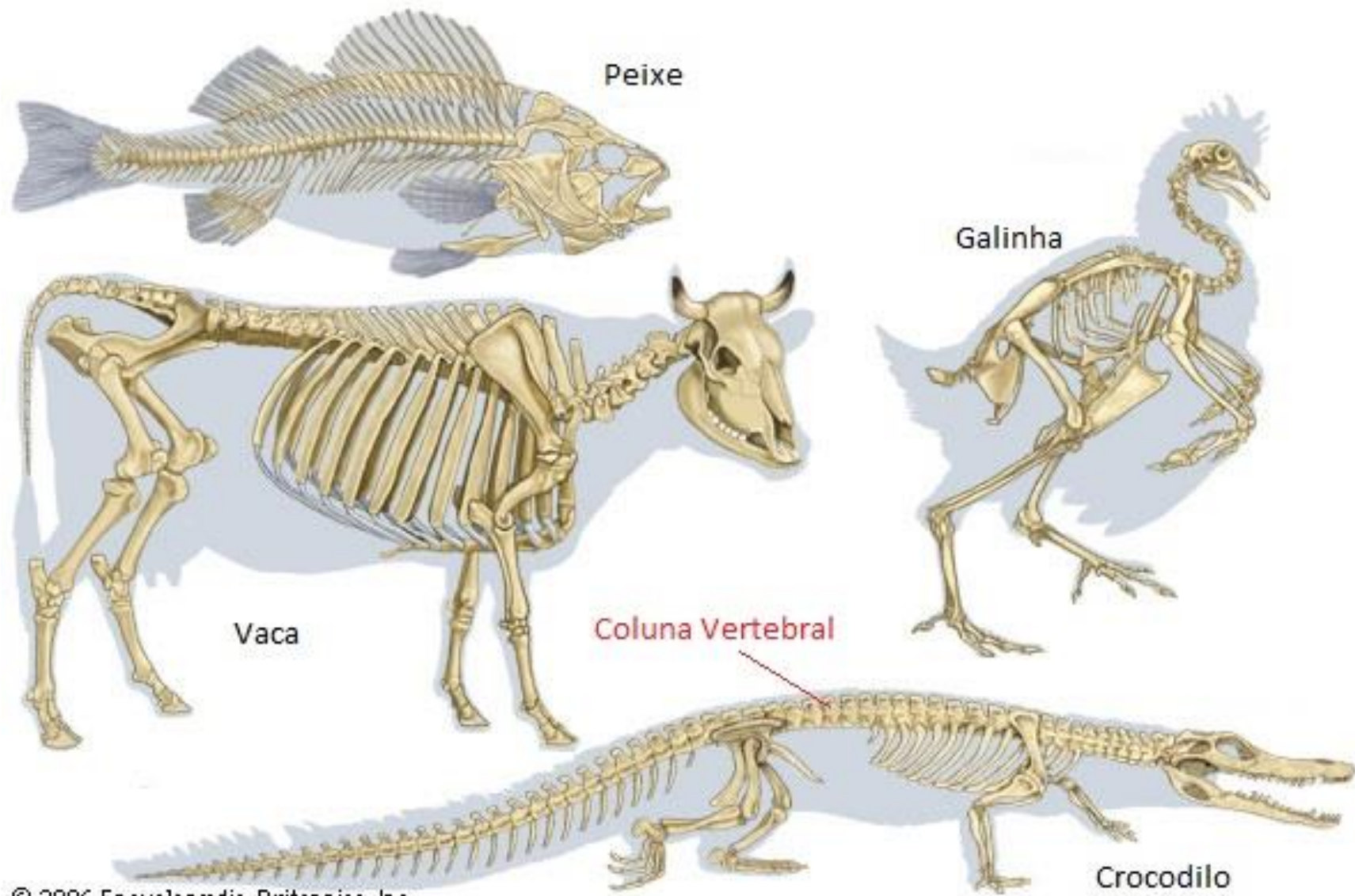
Anatomía animal





Griff. Gallinula.
Muscul. Ant. sup. (sic) Musc.
Ext. (sic) Musc.



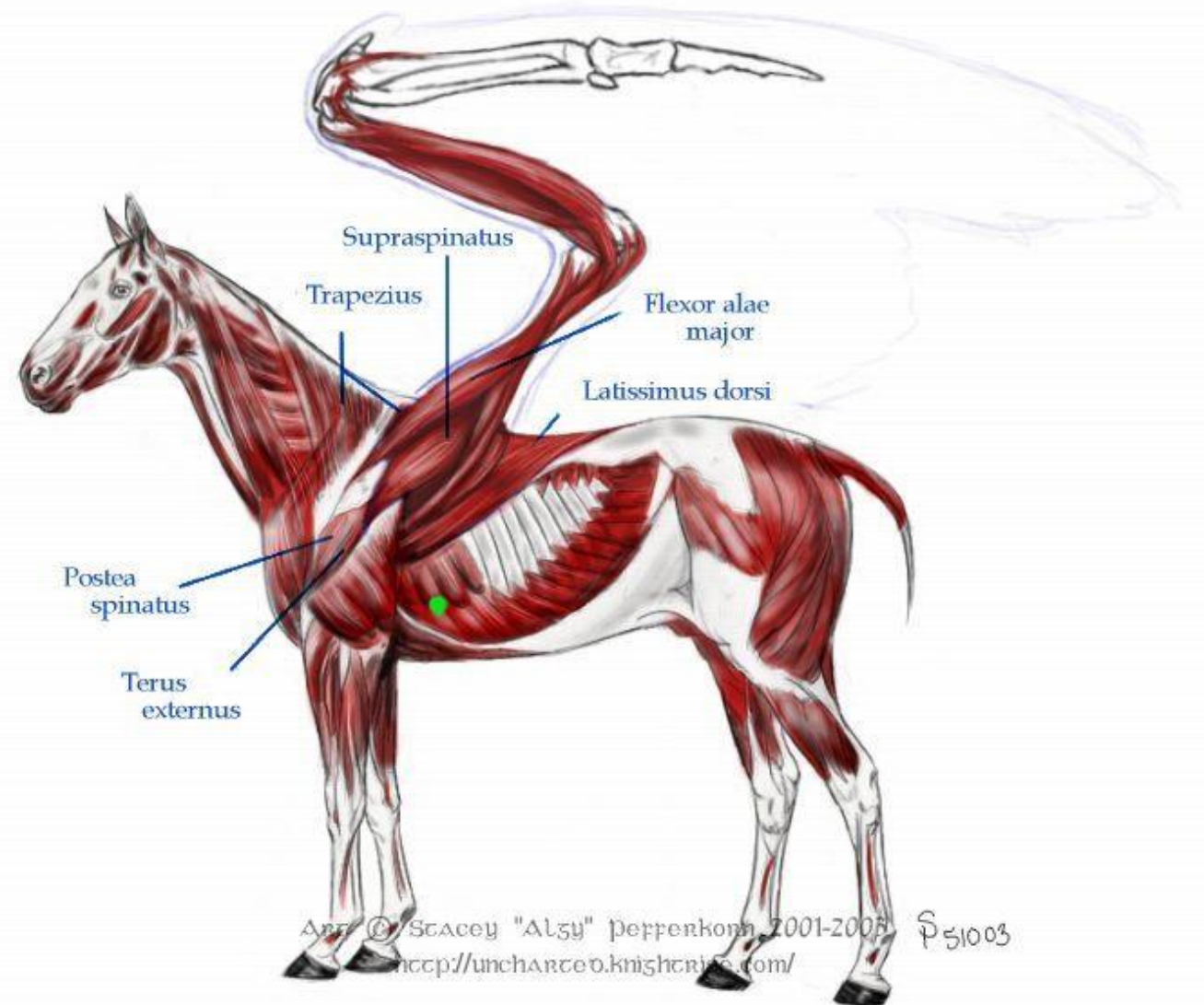


Animais fantásticos



PLATE 6

1. Mentes
2. Bicepsphalicus
3. Deloid
4. Triceps brachii
5. Biceps brachii
6. Bicepsphalicus
7. Extensor capiti medialis
8. Extensor capiti lateralis
9. Altitudo palmaris longus
10. Gluteus medius
11. Semitendinosus
12. Biceps femoris
13. Triceps femoris
14. Gluteus maximus
15. Obliquus externus iliacus
16. Rectus abdominis
17. Sacrospinatus
18. Biceps femoris
19. Biceps femoris
20. Biceps femoris
21. Latissimus dorsi
22. Quadratus lumborum
23. Erector



Anatomía comparada

