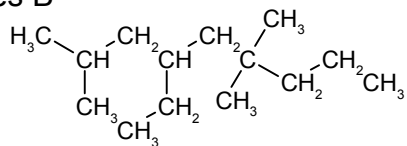


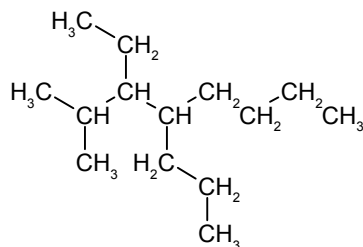
Soluciones B

1)



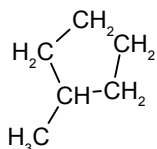
4-ethyl-2,6,6-trimethylnonane

2)



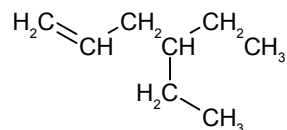
3-ethyl-2-methyl-4-propyloctane

3)



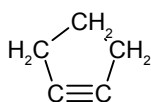
methylcyclopentane

4)



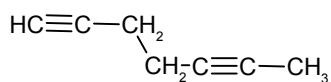
4-ethylhex-1-ene

5)



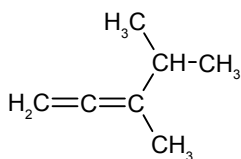
cyclopentyne

6)



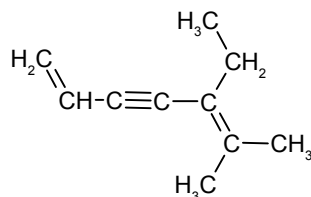
hepta-1,5-diyne

7)



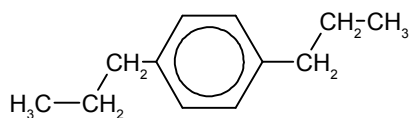
3,4-dimethylpenta-1,2-diene

8)



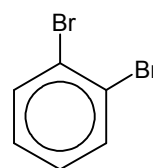
5-ethyl-6-methylhepta-1,5-dien-3-yne

9)



1,4-dipropylbenzene

10)



1,2-dibromobenzene