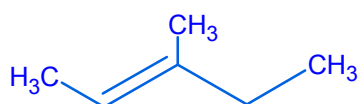
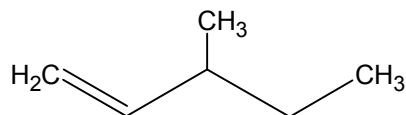
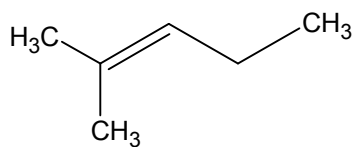
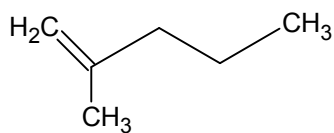
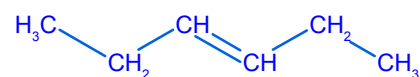
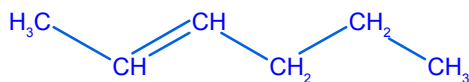
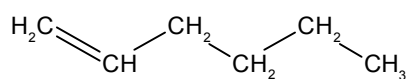
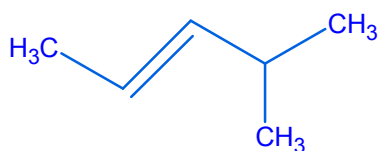
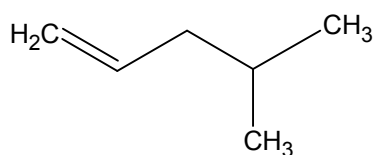


Soluciones ejercicio C. Isomería

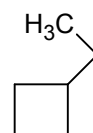
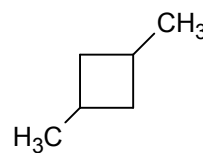
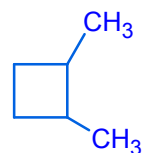
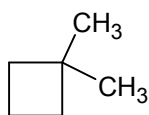
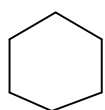
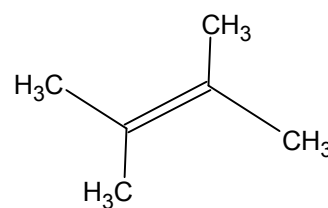
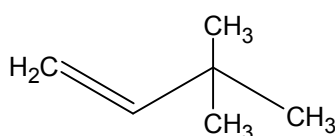
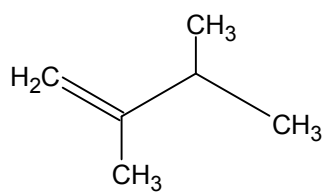
Molecular Formula: C_6H_{12}



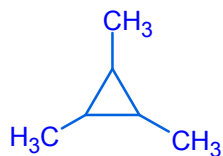
3-methylpent-2-ene



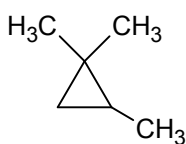
4-methylpent-2-ene



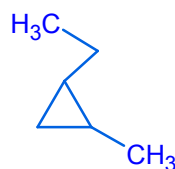
1,2-dimethylcyclobutane



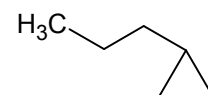
1,2,3-trimethylcyclopropane



1,1,2-trimethylcyclopropane

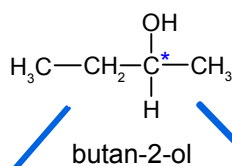
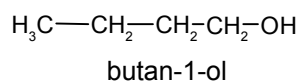


1-ethyl-2-methylcyclopropane

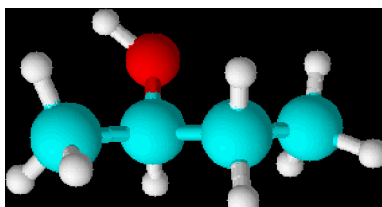
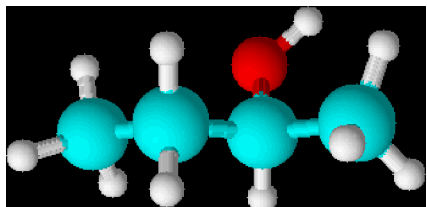


Molecular Formula: C₄H₁₀O

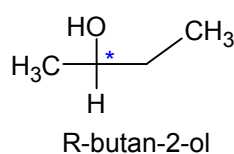
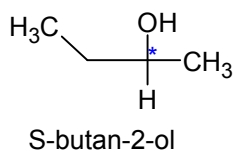
Alcoholes



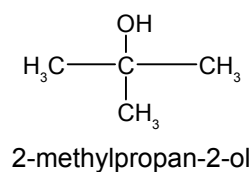
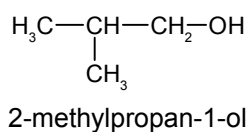
El carbono 2 es asimétrico: el compuesto presenta isomería óptica, hay dos compuestos que no pueden diferenciarse escritos en un plano, los sustituyentes de dicho carbono están dispuestos en el espacio de forma diferente, son imágenes especulares no superponibles



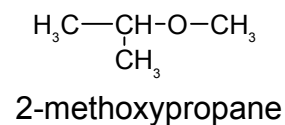
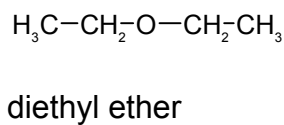
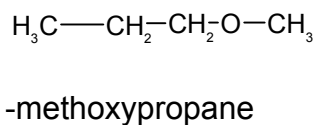
Modelo 3D de bolas y varillas



Proyección de Fisher



Éteres



Compruebase que con la fórmula dada no es posible ningún compuesto con enlaces dobles, triples o ciclos