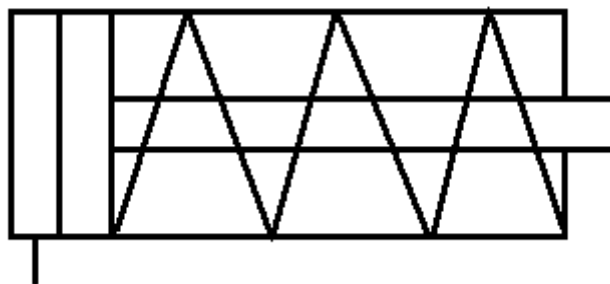
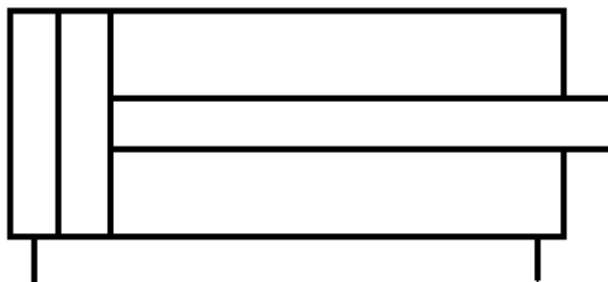


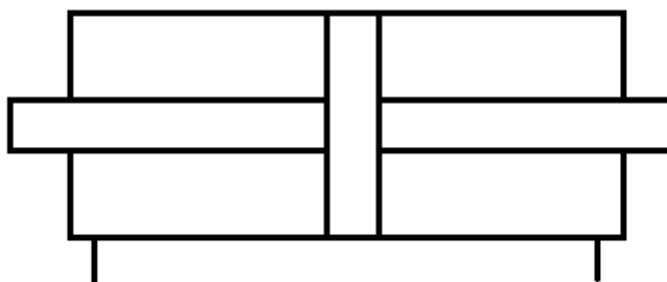
Cilindro de simple efecto



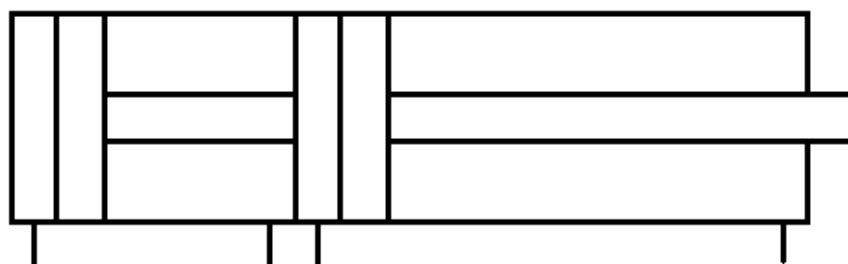
Cilindro de doble efecto

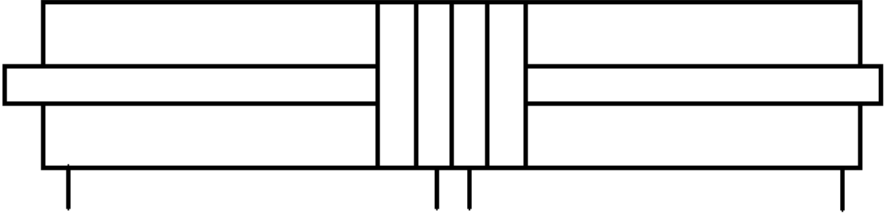
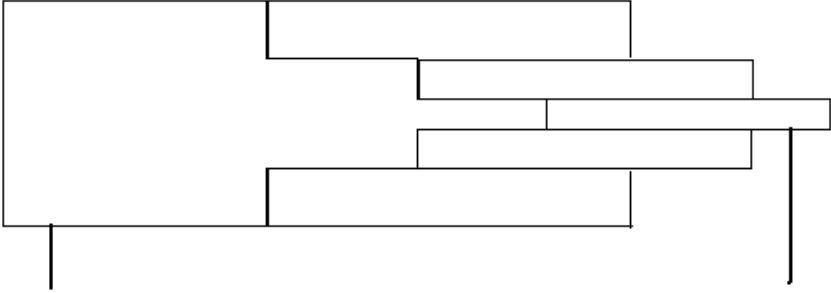
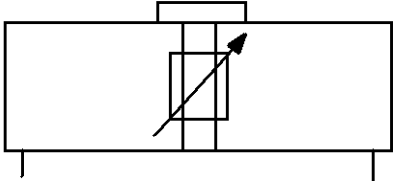
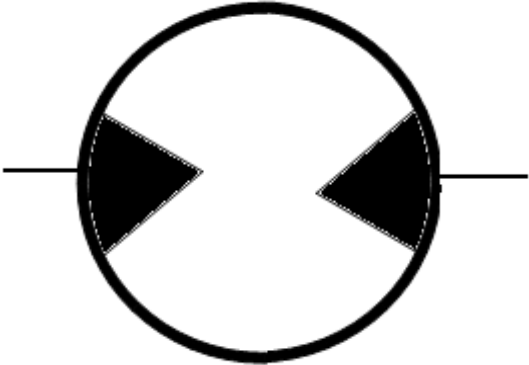



Cilindro doble vástago

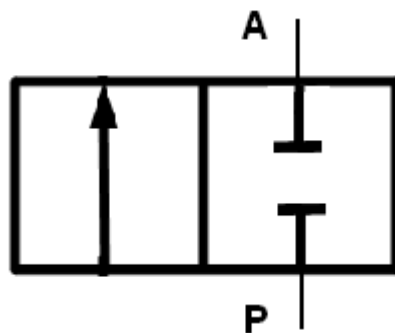


Cilindro tándem

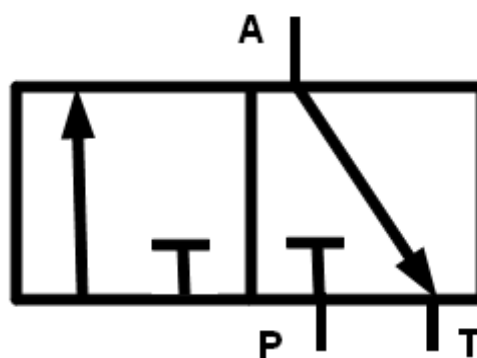


Cilindro dúplex gemelo	
Cilindro telescópico	
Cilindro sin vástago	
Motor hidráulico	
Cilindro oscilante	

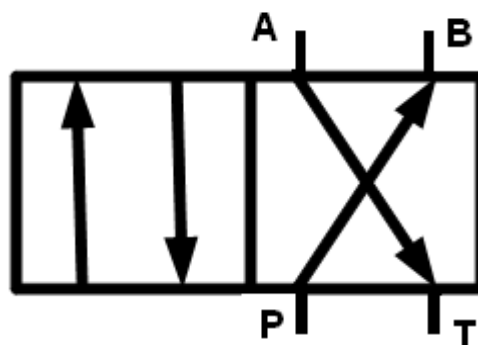
Válvula 2/2



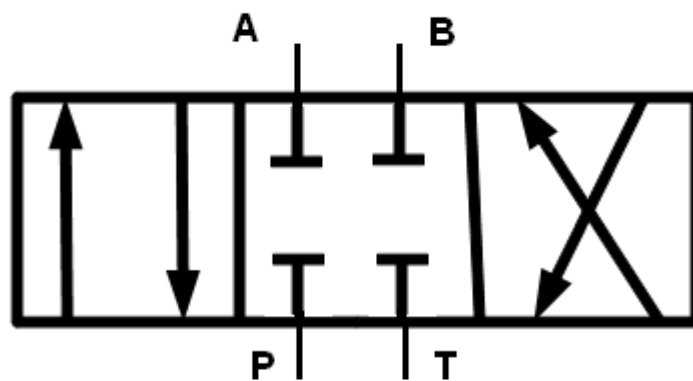
Válvula 3/2

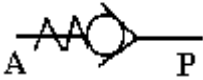
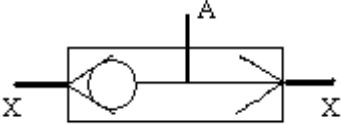
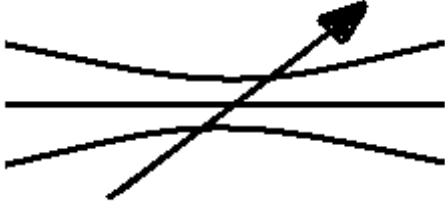
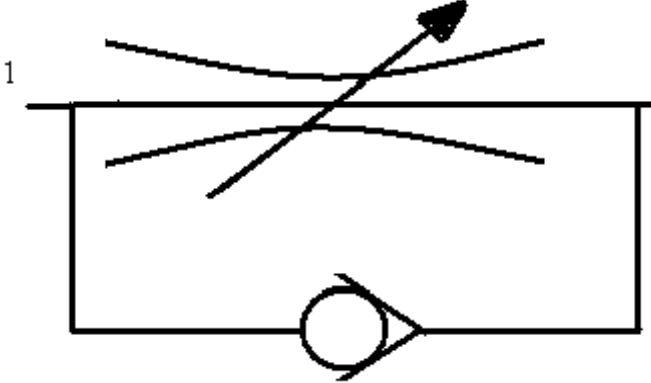
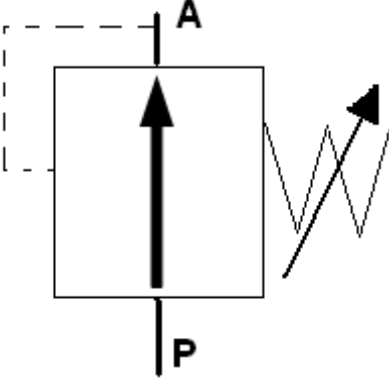


Válvula 4/2

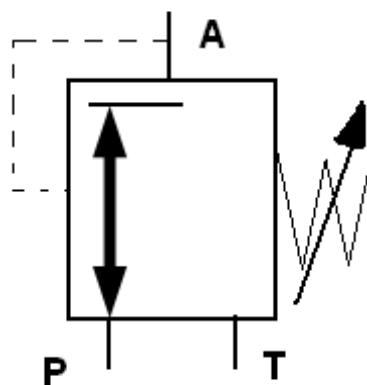


Válvula 4/3

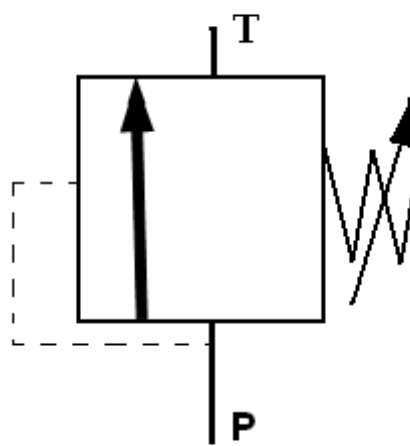


Antirretorno	
Selectora de circuito	
Regulador de flujo bidireccional	
Regulador de flujo unidireccional	
Regulador de presión de 2 vías	

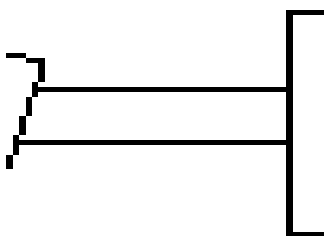
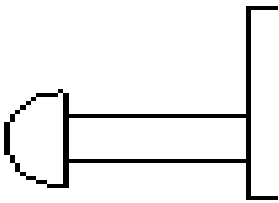
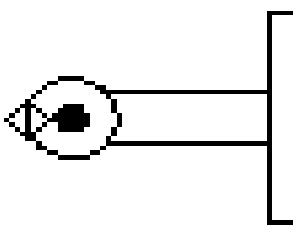
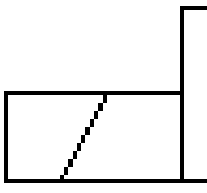
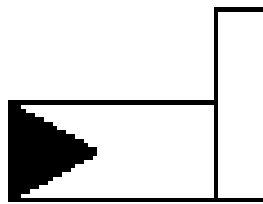
Regulador de presión de 3 vías

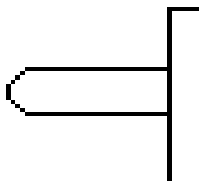
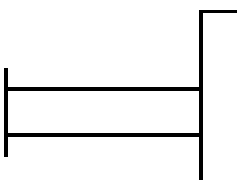
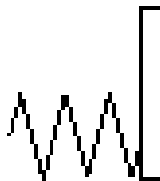
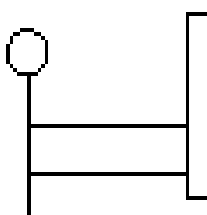


Limitador de presión



TIPOS DE ACCIONAMIENTOS PARA VÁLVULAS

Pedal	
Pulsador	
Rodillo	
Eléctrico	
Hidráulico	

Leva	
Manual	
Muelle	
Palanca	
Palanca con enclavamiento	