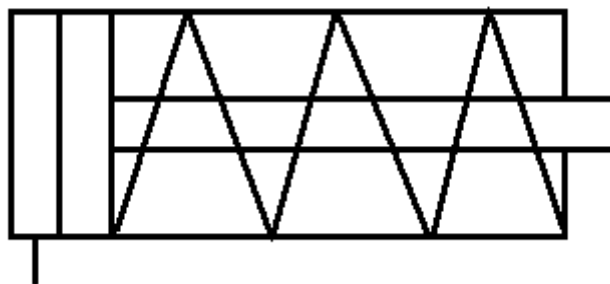
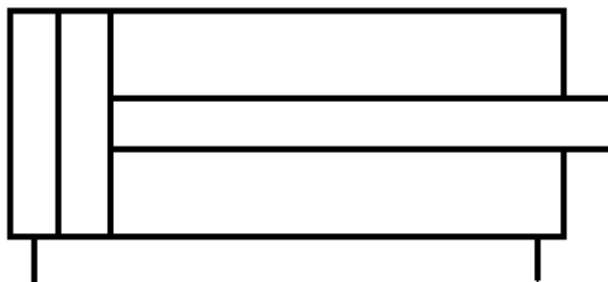


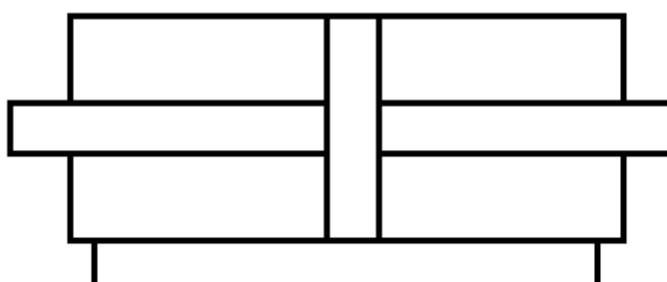
Cilindro de simple efecto



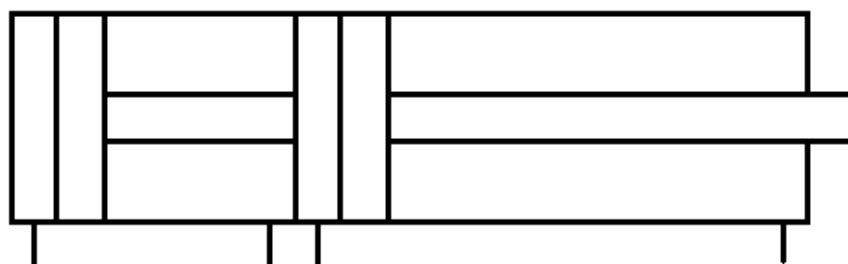
Cilindro de doble efecto

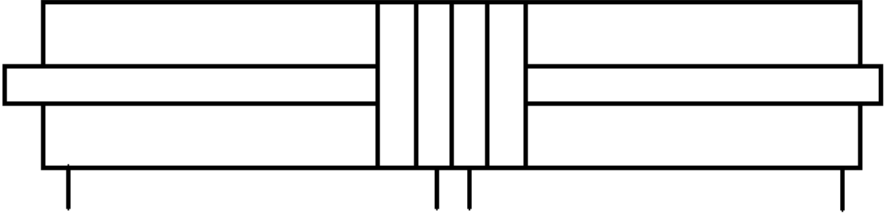
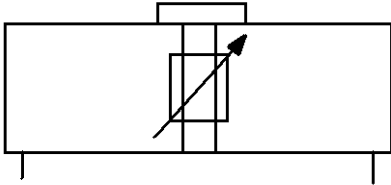
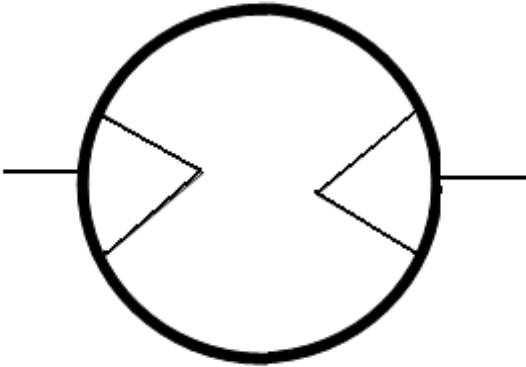
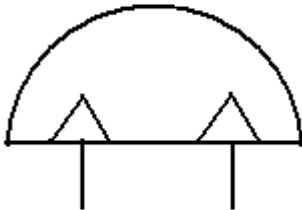
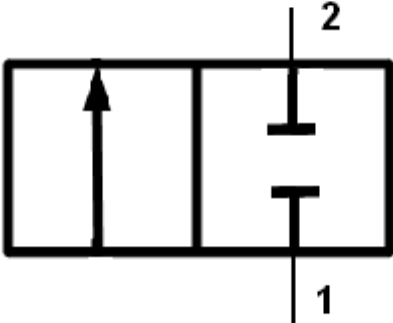


Cilindro de doble vástago

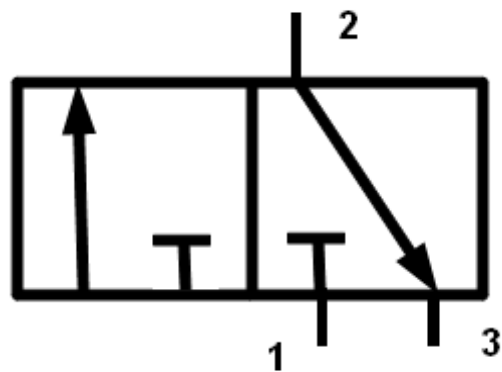


Cilindro tándem

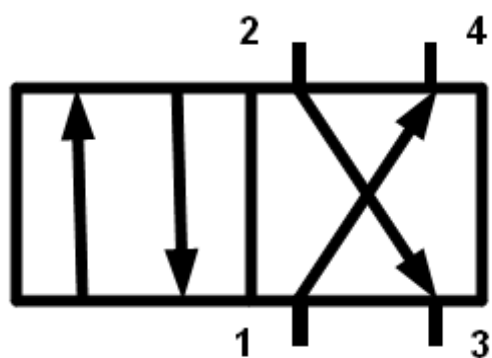


Cilindro dúplex gemelo	
Cilindro sin vástago	
Motor neumático	
Cilindro oscilante	
Válvula 2/2	

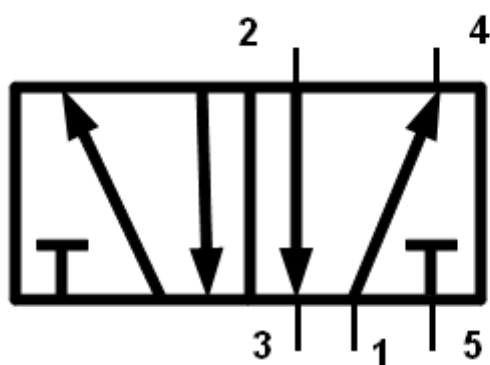
Válvula 3/2



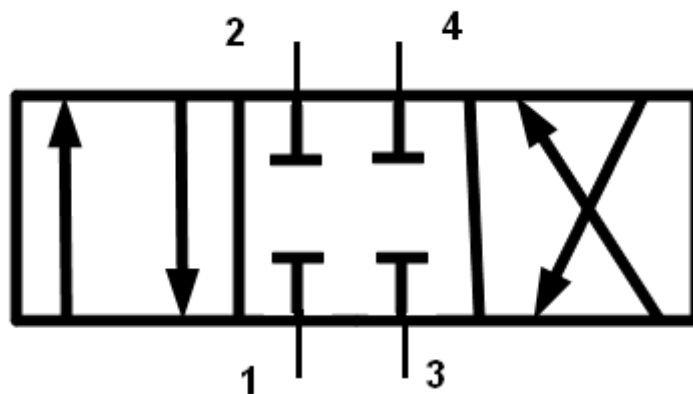
Válvula 4/2


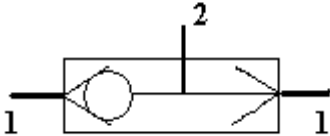
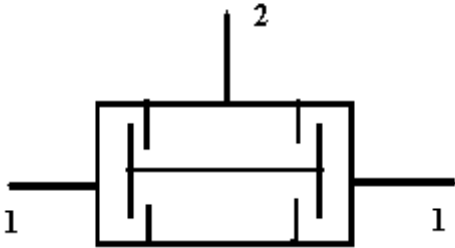
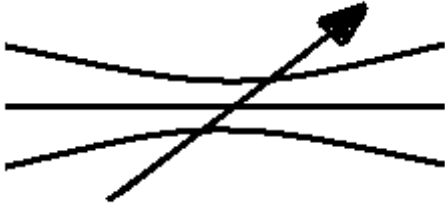
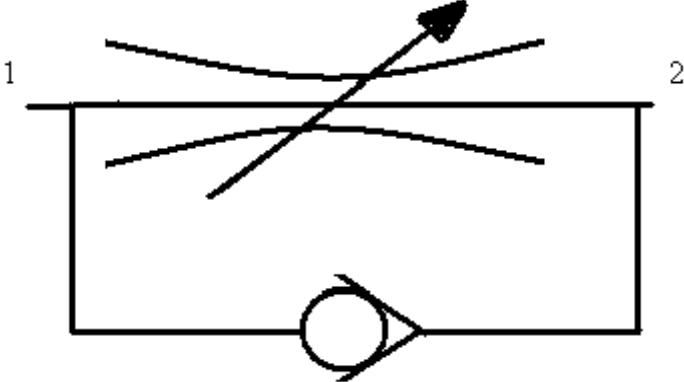
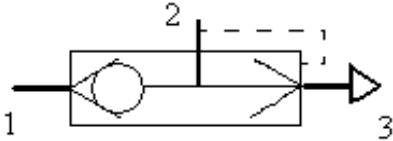


Válvula 5/2

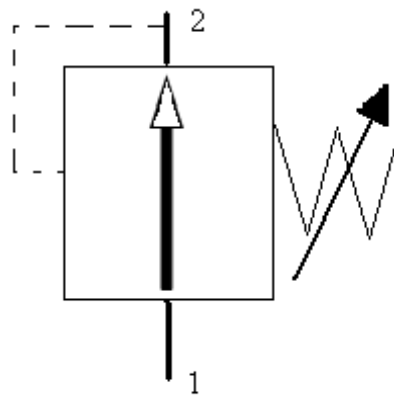


Válvula 4/3

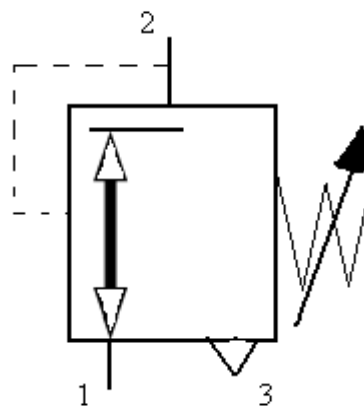


Antirretorno	
Selectora de circuito	
Válvula de simultaneidad	
Regulador de flujo bidireccional	
Regulador de flujo unidireccional	
Escape rápido	

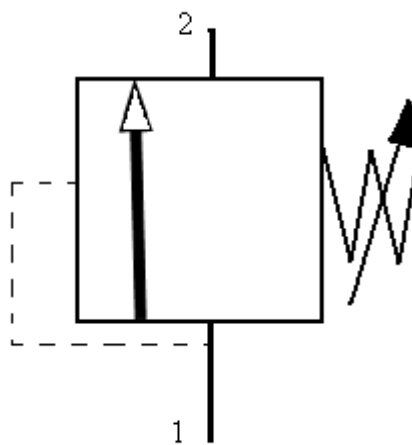
Reguladora de presión  
de 2 vías



Reguladora de presión  
de 3 vías

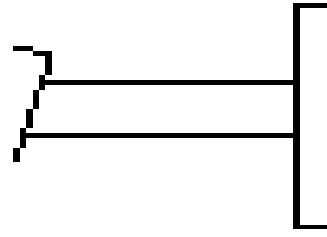


Limitador de presión

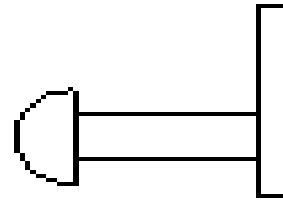


## TIPOS DE ACCIONAMIENTOS PARA VÁLVULAS

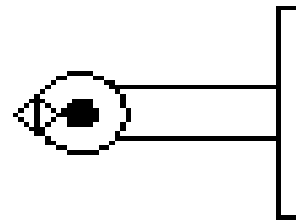
Pedal



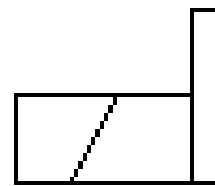
Pulsador



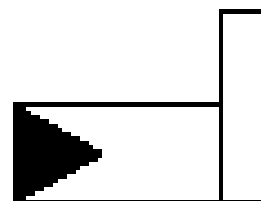
Rodillo

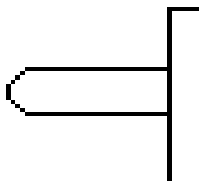
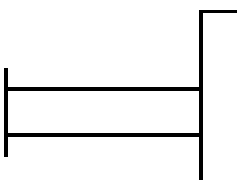
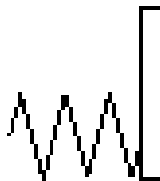
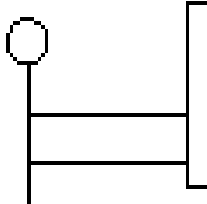


Eléctrico



Hidráulico



Leva	
Manual	
Muelle	
Palanca	
Palanca con enclavamiento	