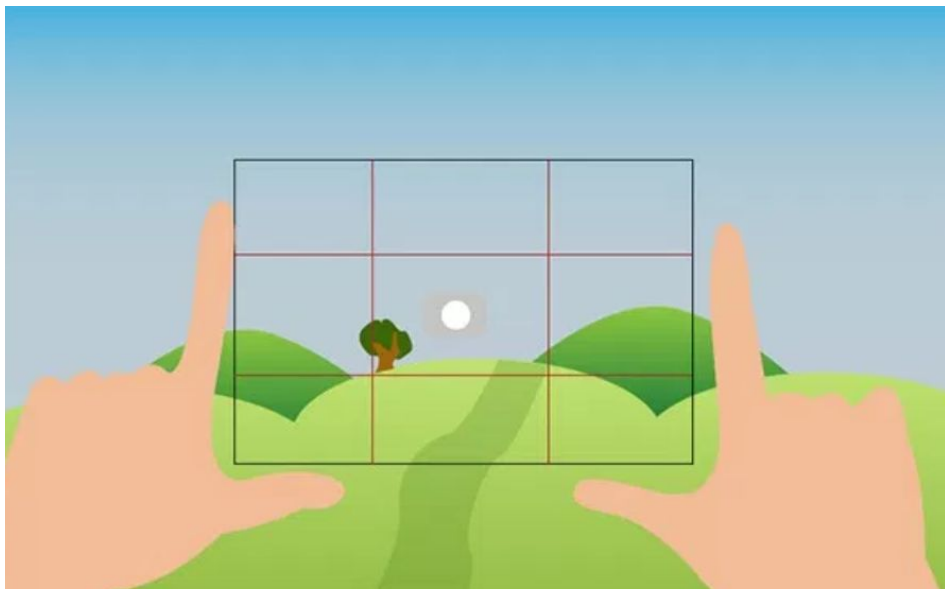
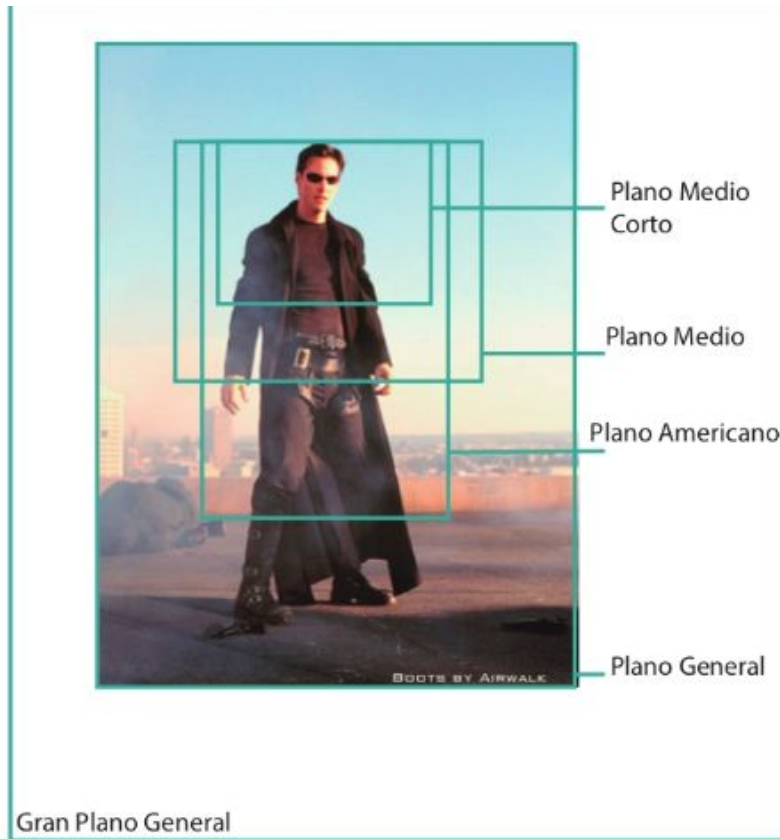


# ENCUADRE



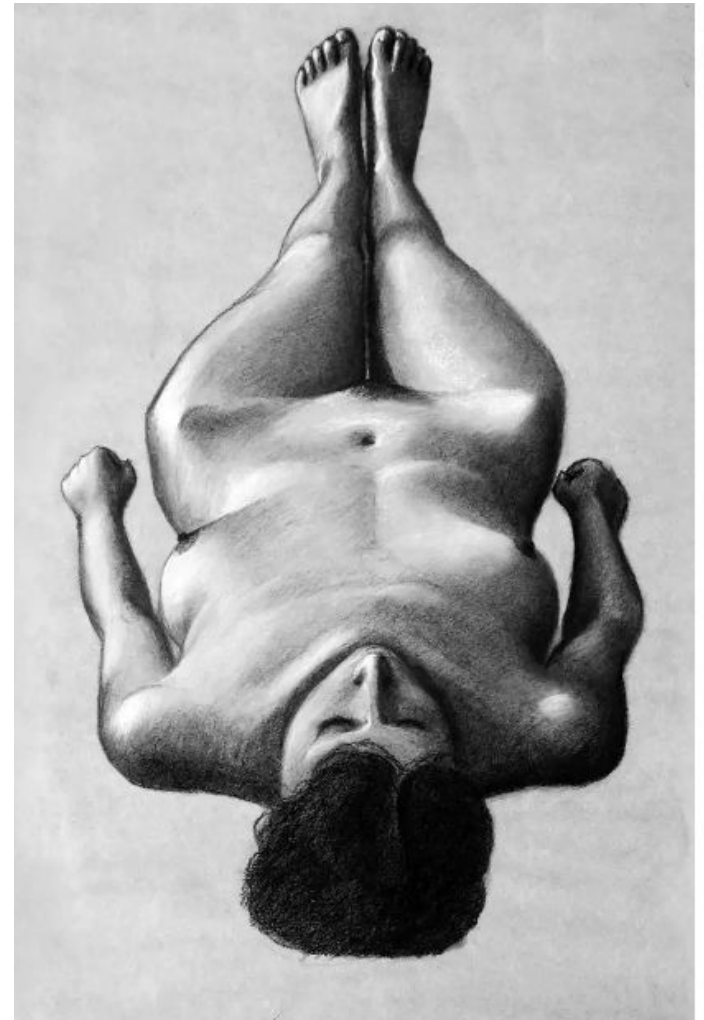
Visor para encuadrar



# ESCORZO

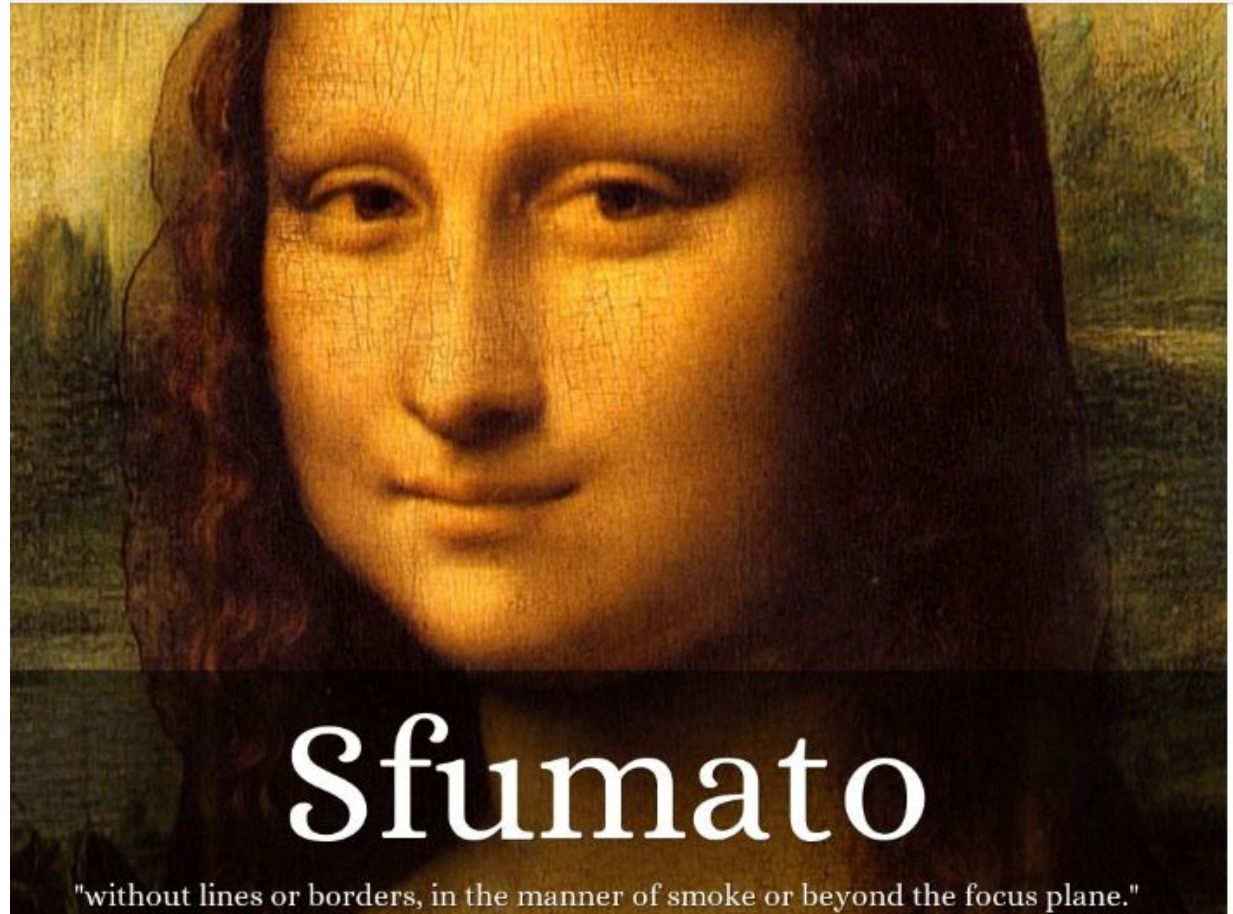


Brazo en ESCORZO en un cuadro de Caravaggio



# ESFUMADO

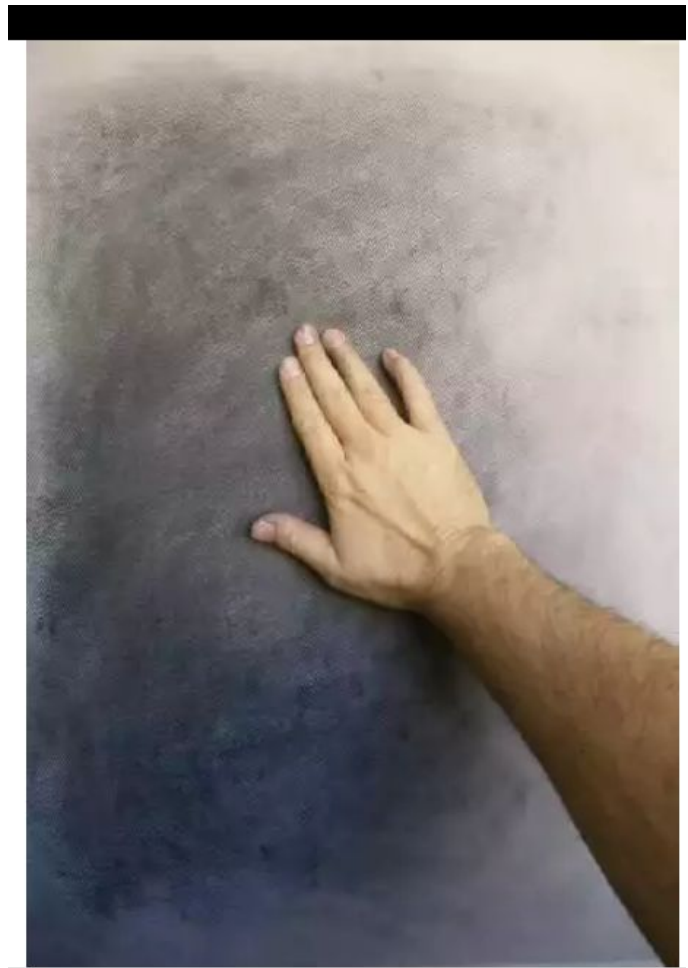
Leonardo da Vinci  
fue el creador del  
sfumato o  
ESFUMADO.



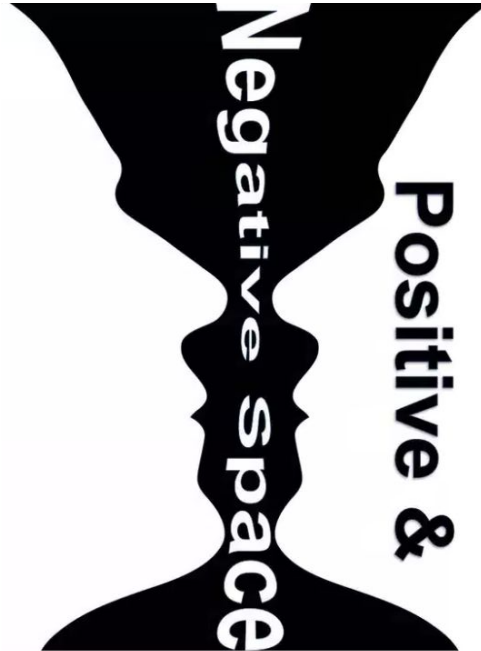
# Sfumato

"without lines or borders, in the manner of smoke or beyond the focus plane."

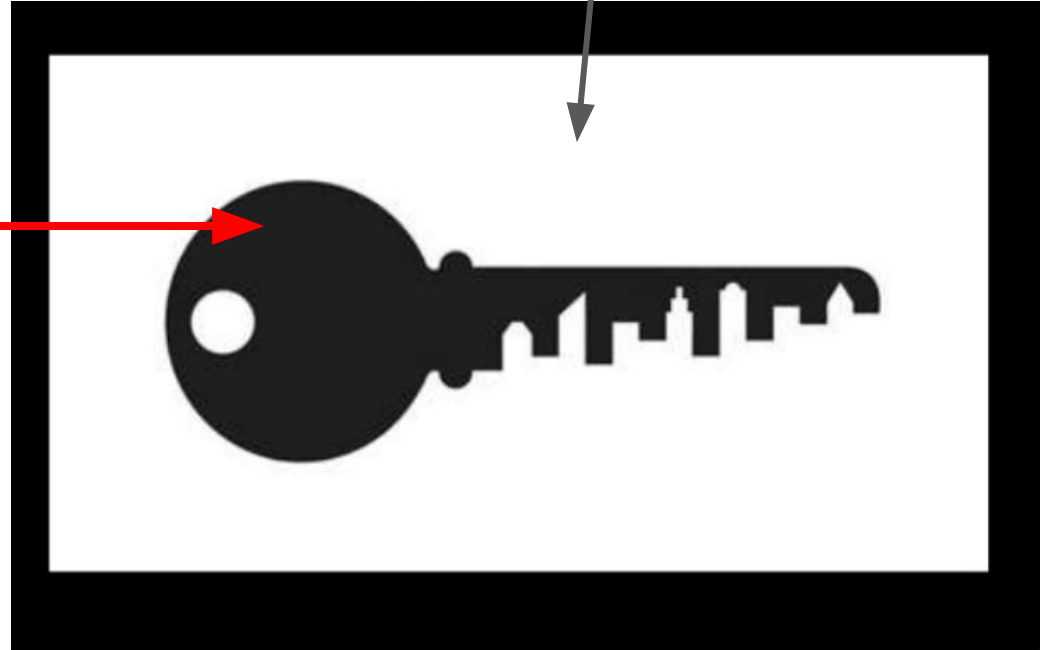
# FONDO TONAL



**FORMA  
POSITIVA**



**FORMA  
NEGATIVA**



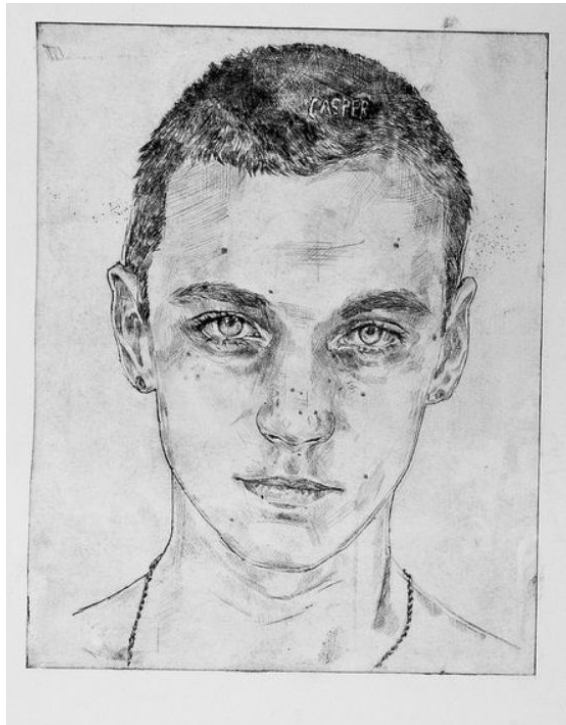
**FUNDIDO**



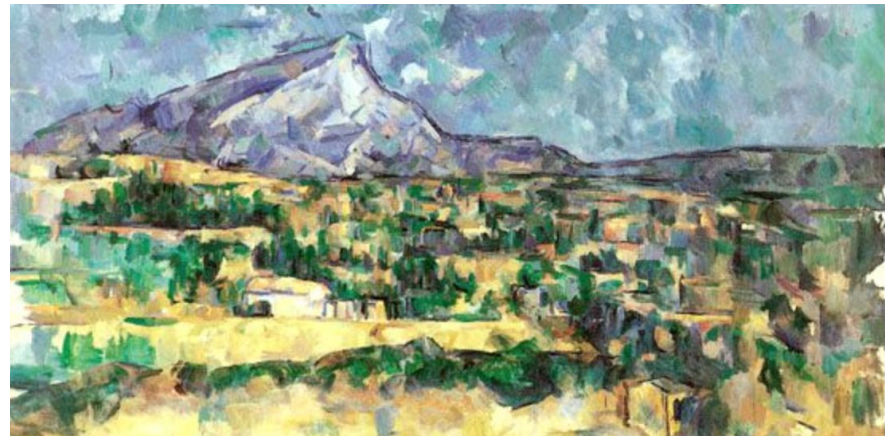


# GÉNERO

Retrato

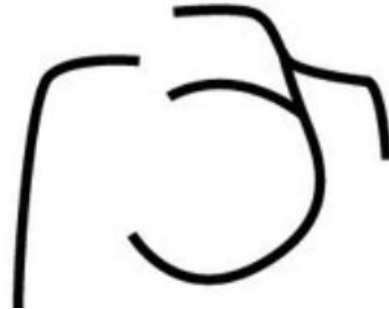


Paisaje



Bodegón

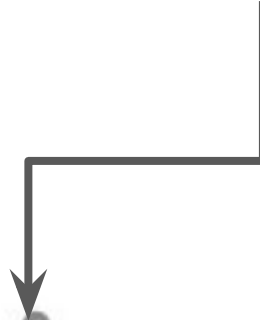
# ICÓNICO/ICONICIDAD







**LÍNEA DE  
CONTORNO**



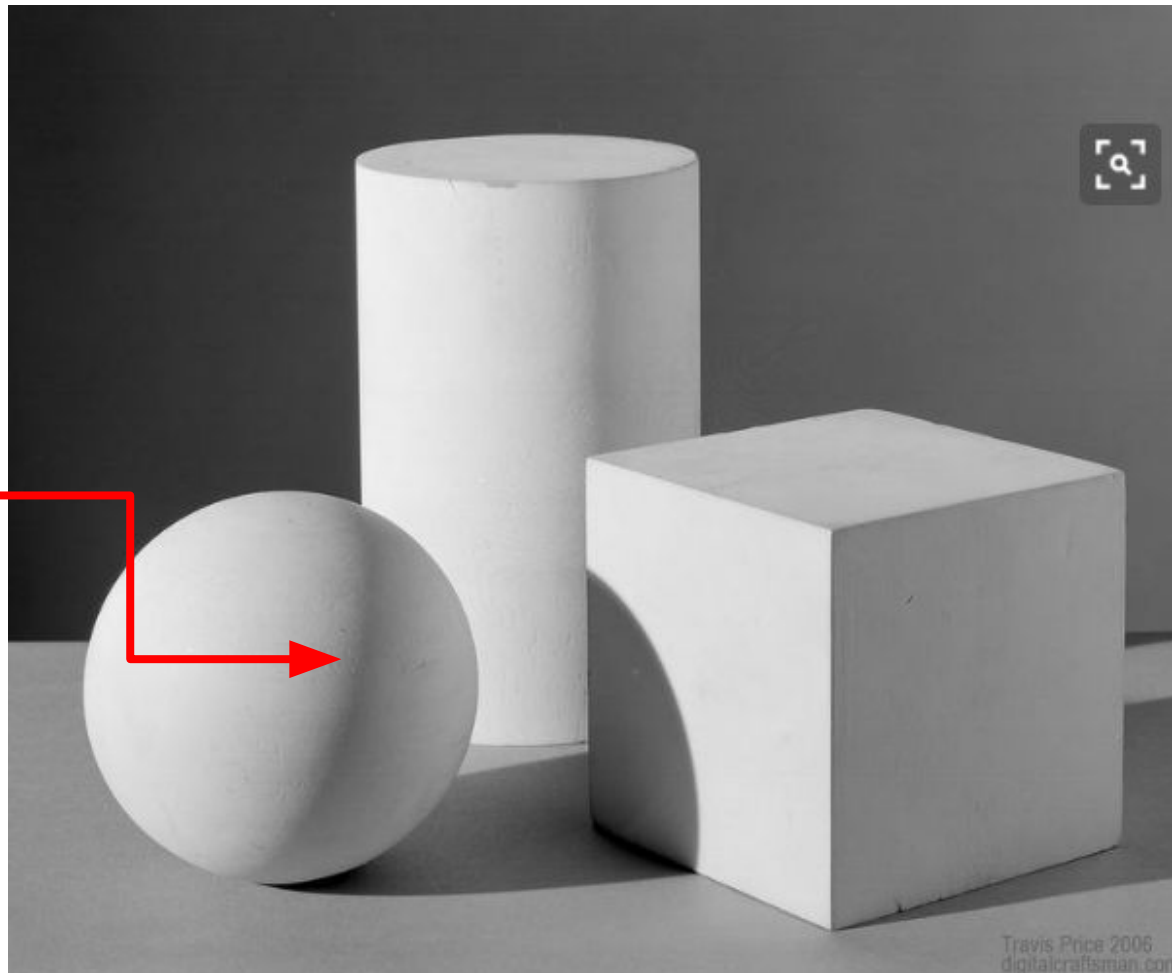
# MONOCROMO/MONOCROMÁTICO

Ilustración monocromática en azul





**PENUMBRA**



# PIGMENTO

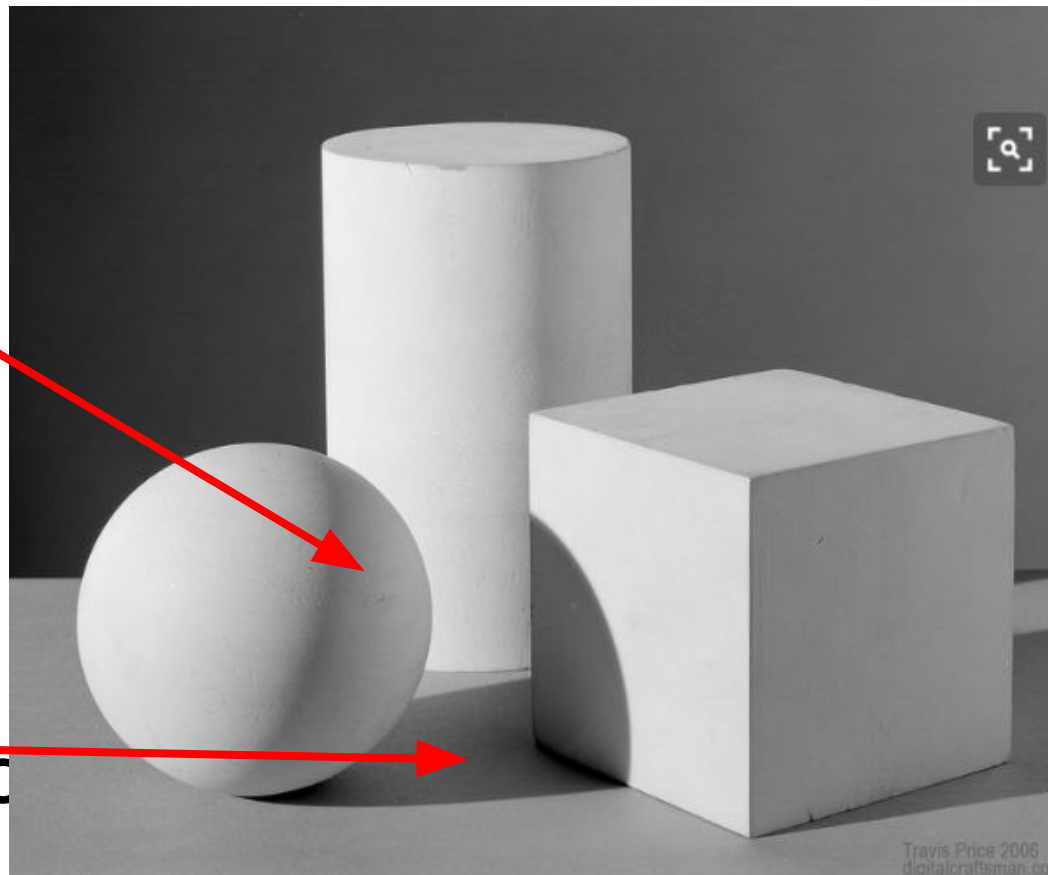


PROPORCIÓN

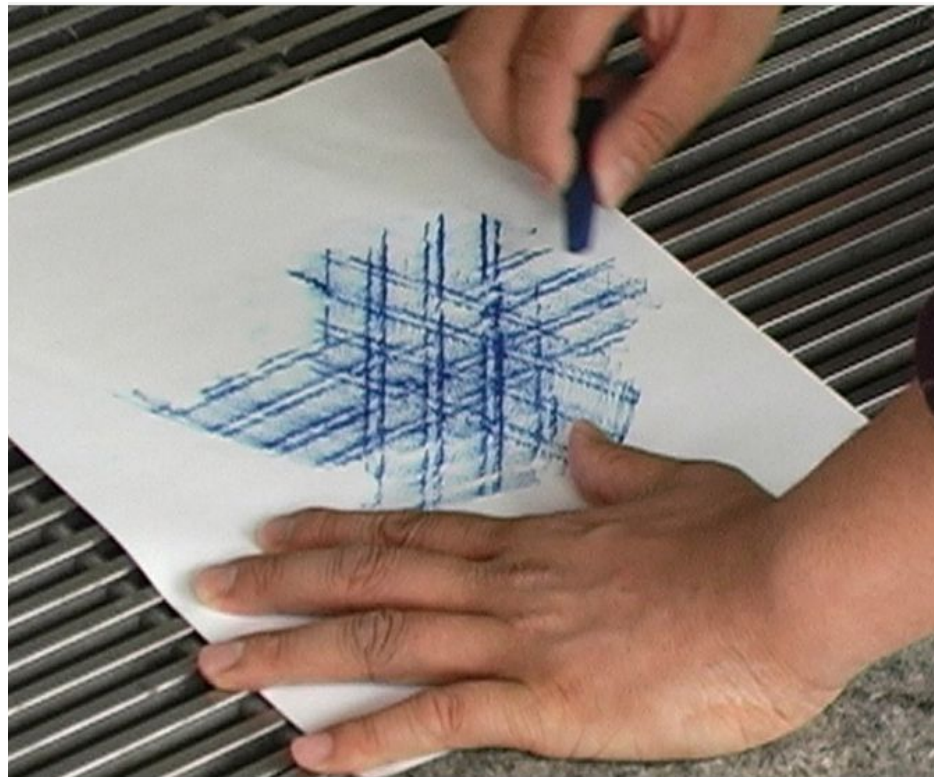


**SOMBRA  
PROPIA**

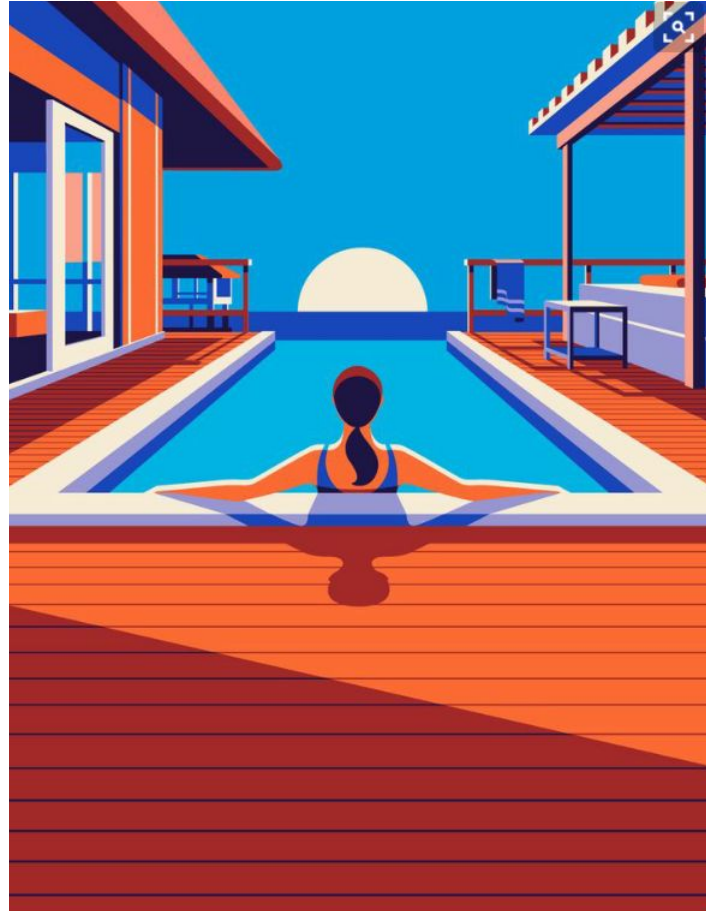
**SOMBRA  
ARROJADA/PROYECTADA**



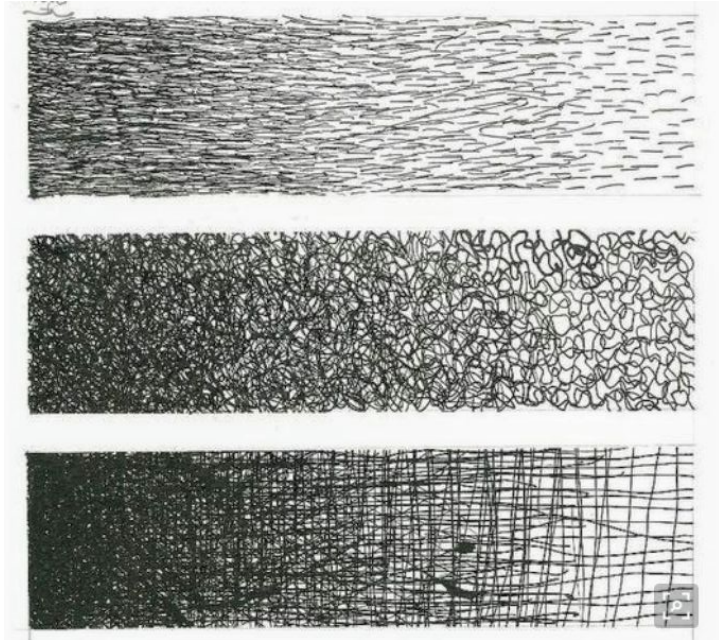
# TEXTURA



# TINTA PLANA



# TRAMA





# VALOR

EL VALOR EN EL COLOR





# VELADURA

