

The background features a stylized illustration of a desk. On the left, a desk lamp with a red neck and a green shade sits on a dark blue shelf. Below it, a potted plant with green leaves is in a dark blue pot with a red stripe. In the center, a green pen holder with a blue base contains several pens. To the right, a stack of four books in blue, green, and red is on a dark blue shelf, with a red book leaning against them. The entire scene is set against a light green background.

PROCEDIMIENTO DE AVALIACIÓN

1. Observación - 5%

2. Probas - 80%

Listening 20%

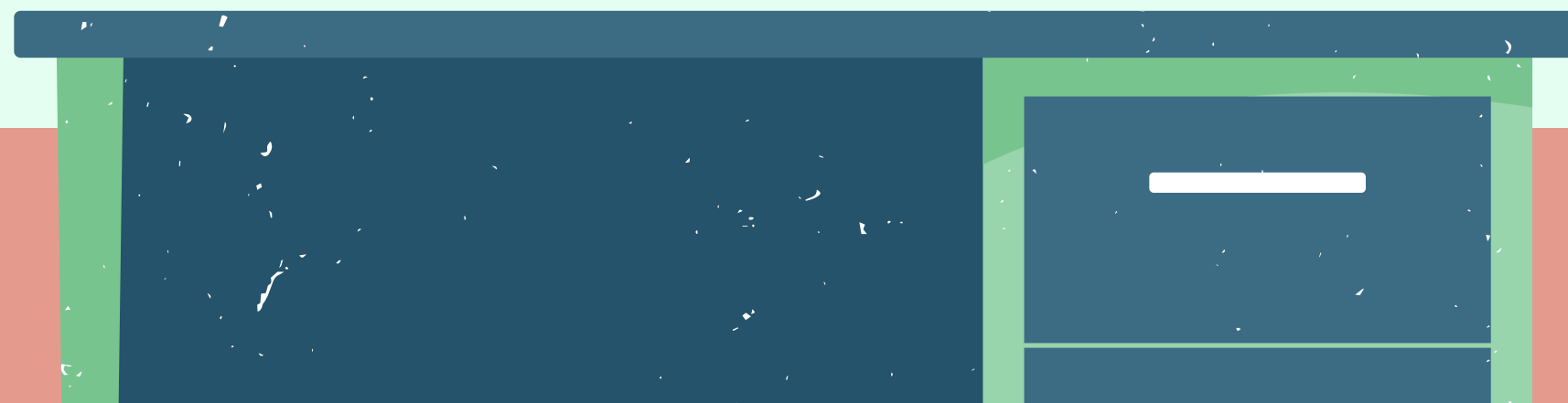
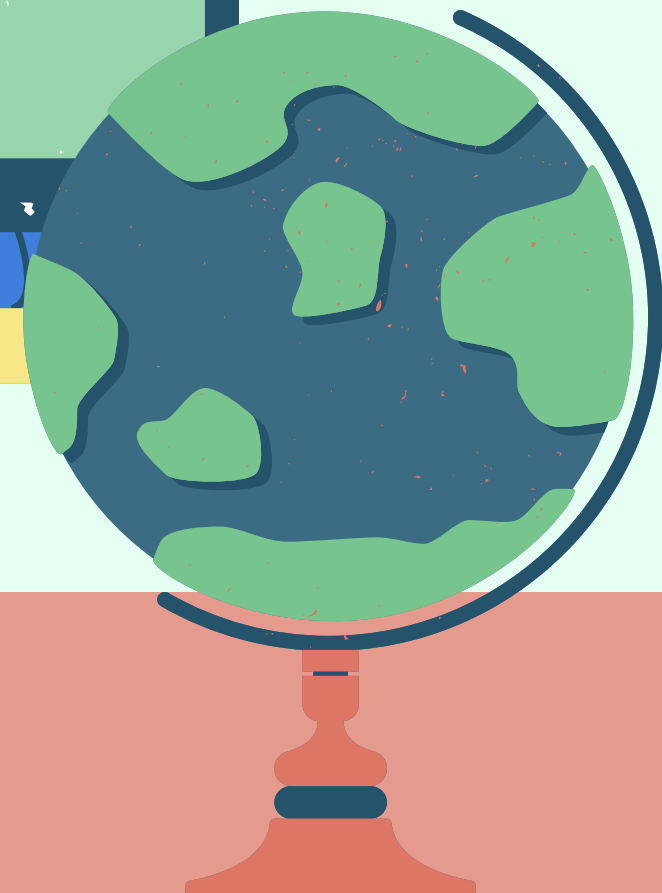
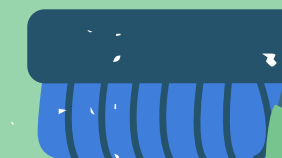
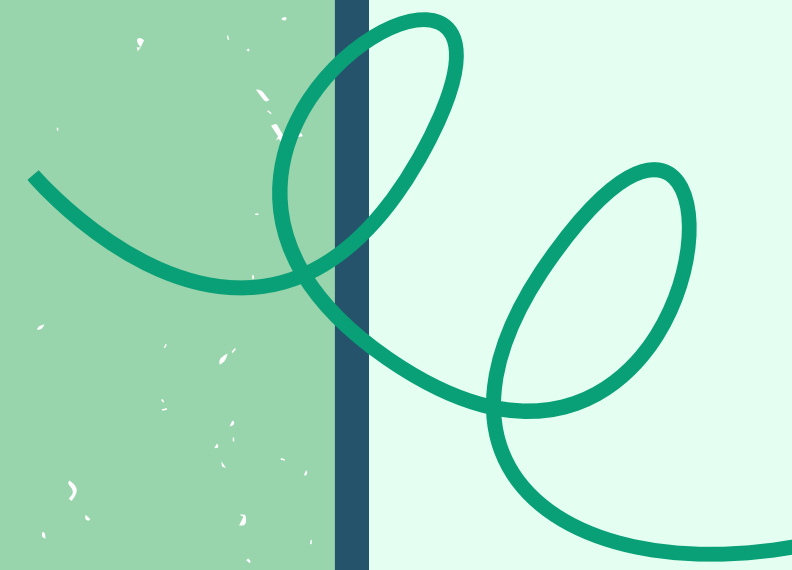
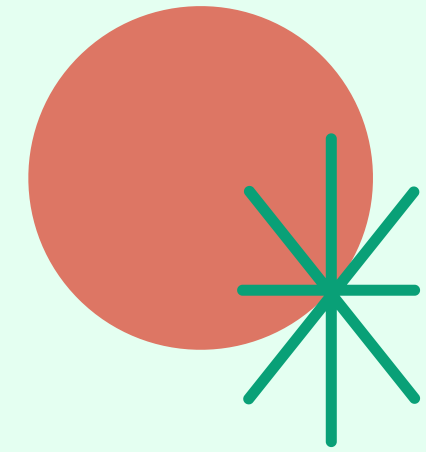
Speaking 20%

Reading 20%

Writing 20%

Use of English 20%

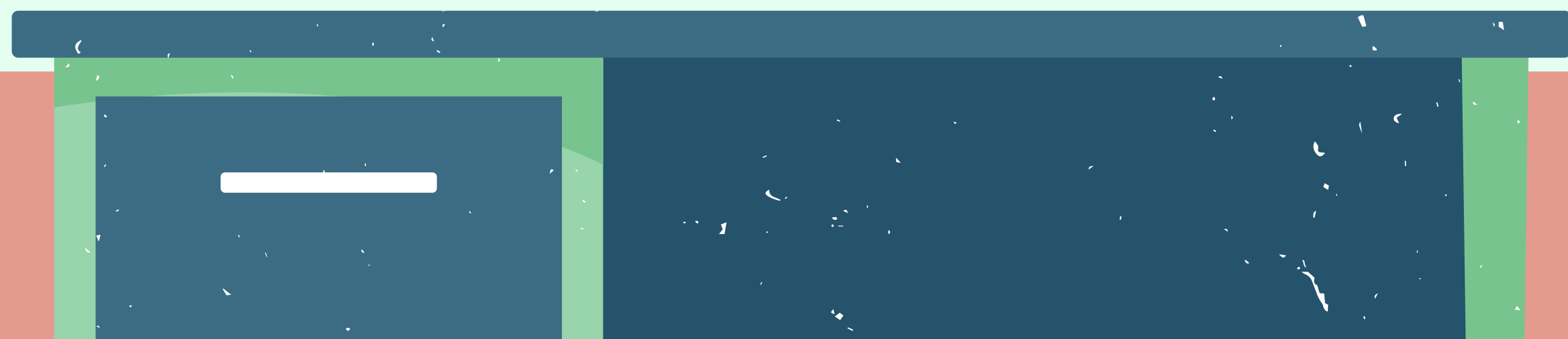
3. Producción 15%



1. OBSERVACIÓN: A ACTITUDE DOS ALUMNOS CARA Á MATERIA.

2. PROBAS: CADA TRIMESTRE FARASE COMO MÍNIMO UNHA PROBA DE EXPRESIÓN E COMPRENSIÓN ESCRITA E DE COMPRENSIÓN E EXPRESIÓN ORAL.

3. PRODUCCIÓNS: TAREFAS, GRAVACIÓN DE AUDIO OU VIDEO, REDACCIÓNS, ETC.



AVALIACIÓN NEGATIVA

- ABANDONO DA MATERIA.
- NON COLABORAR NA CLASE.
- EXAMES SEN UN MÍNIMO DE COMPETENCIA.
- NON PRESENTARSE AOS EXAMES SEN UNHA "XUSTIFICACIÓN DOCUMENTADA".
- COPIAR DURANTE O EXAME.



ENJOY
YOUR
LEARNING!

