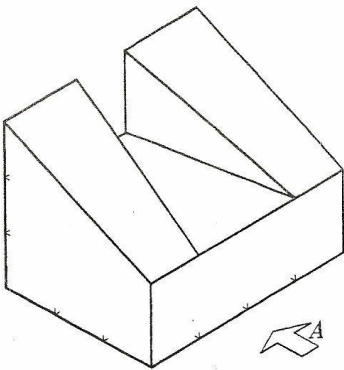
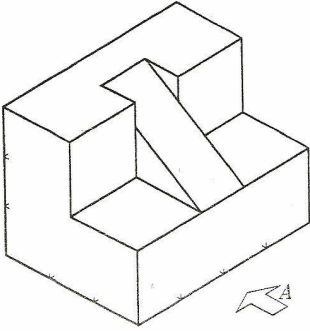


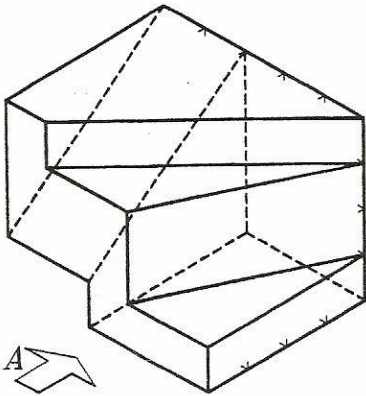
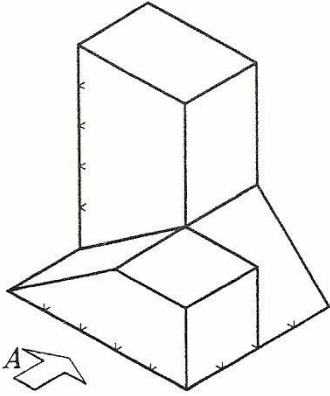


## EXERCICIOS AUTOAVALIABLES TEMA 1: NORMALIZACIÓN

1) Delinear planta alzado e perfil da peza dada.

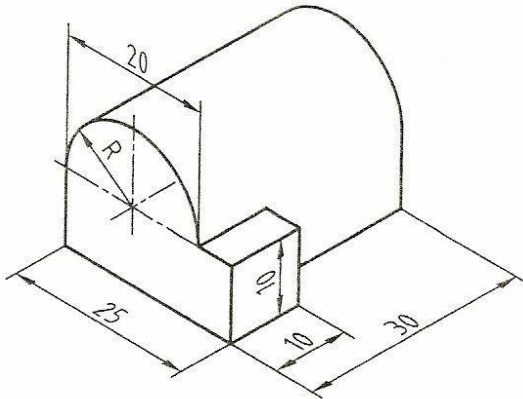
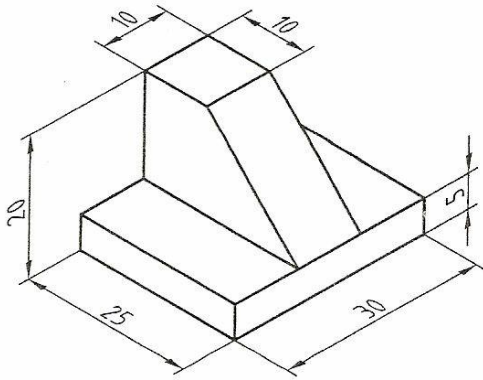


2) Delinear planta, alzado e perfil da peza dada.





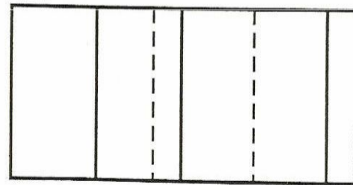
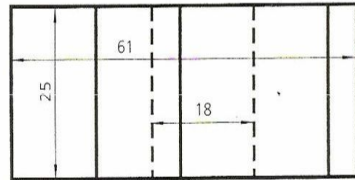
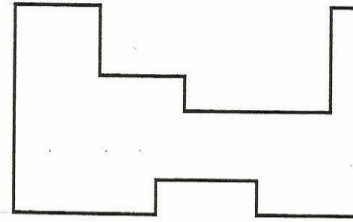
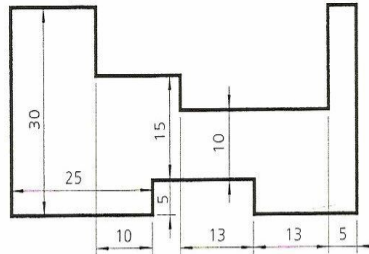
3) Delinear as vistas necesarias para definir a peza. Acoutar.



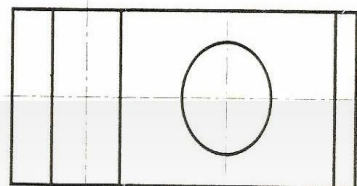
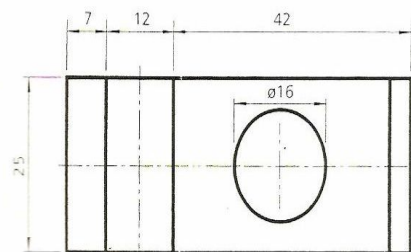
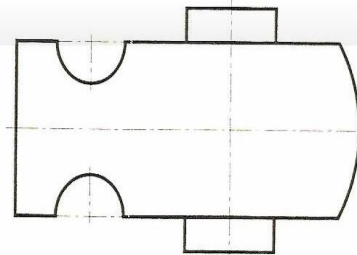
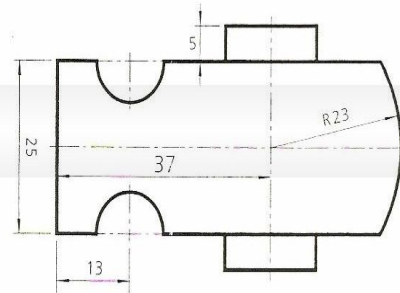
### EXERCICIO AUTOAVALIABLE: SECCIÓN 1

1) Preséntanse tres corpos dados polas súas vistas diédricas: alzado e planta. Como exercicio de autocomprobación, trátase de localizar os erros de anotación que se cometeron ao dimensionar as vistas e volvelas a acoutar correctamente.

1

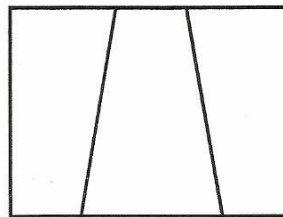
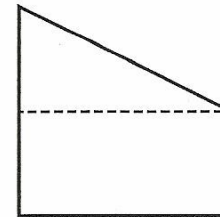
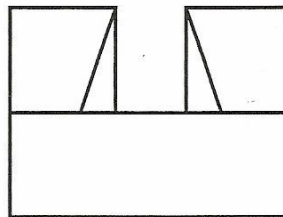
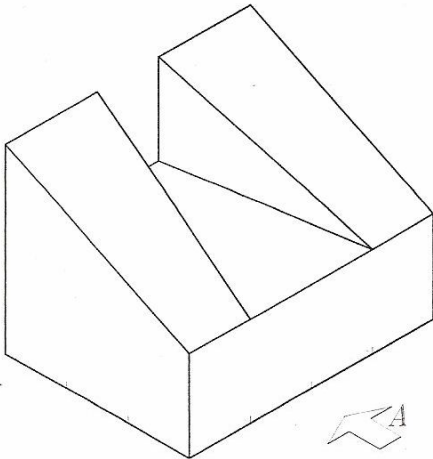
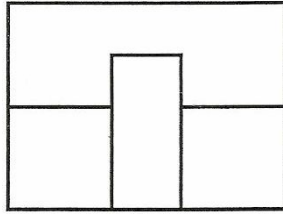
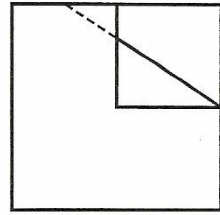
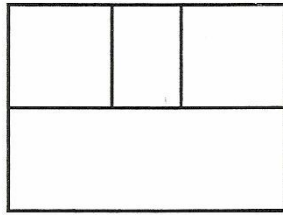
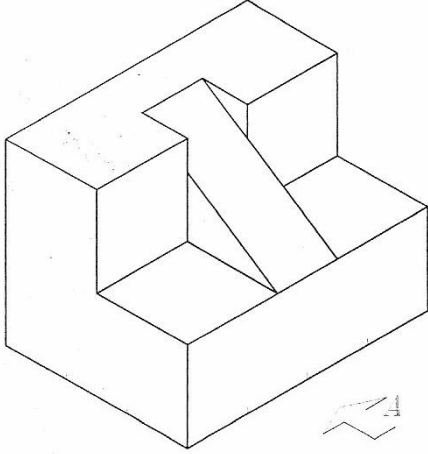


2

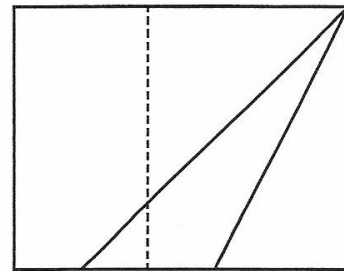
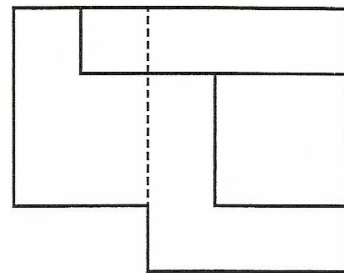
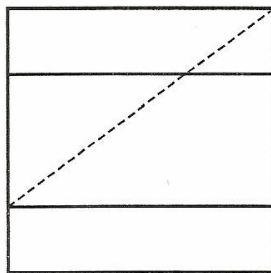
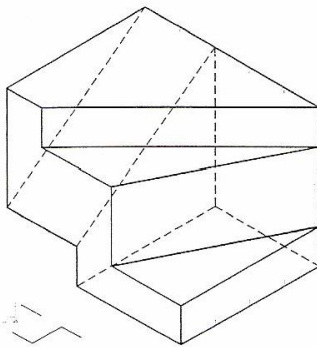
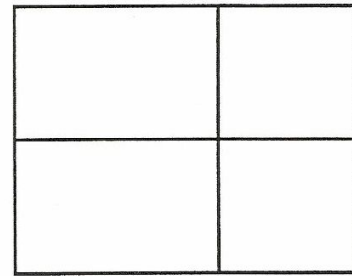
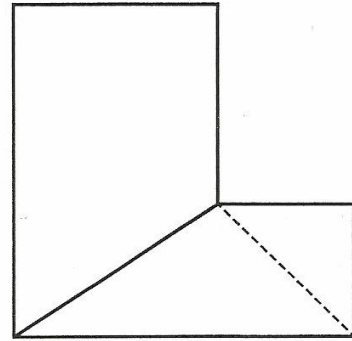
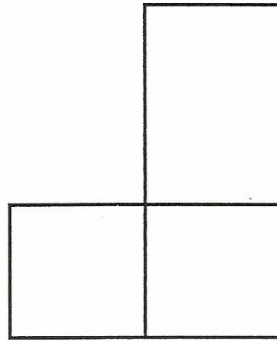
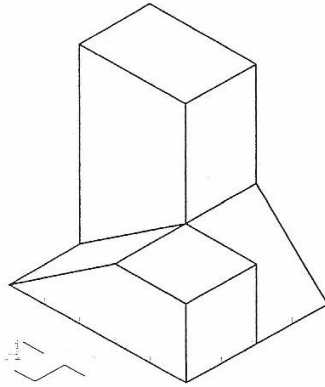


## EXERCICIOS AUTOAVALIABLES TEMA 1: NORMALIZACIÓN SOLUCIONARIO

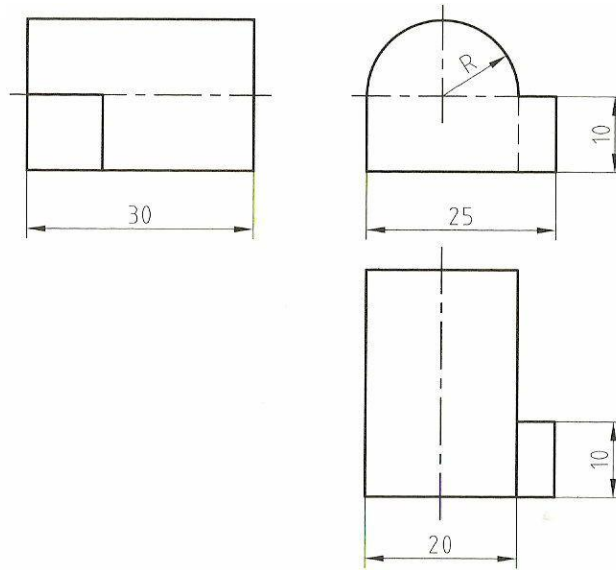
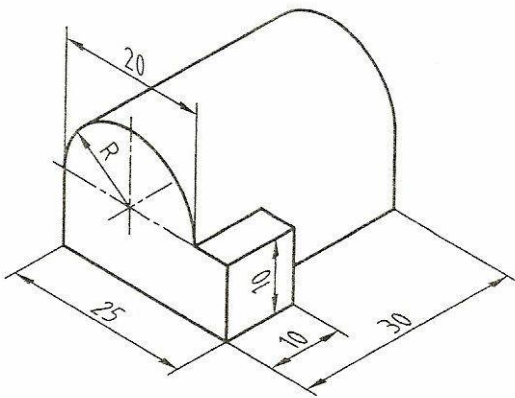
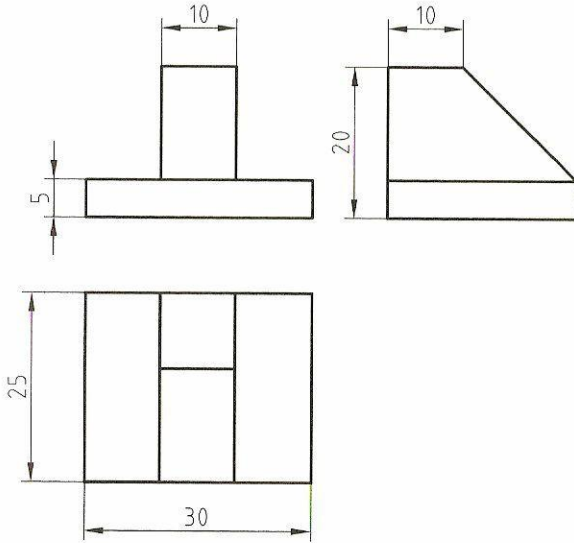
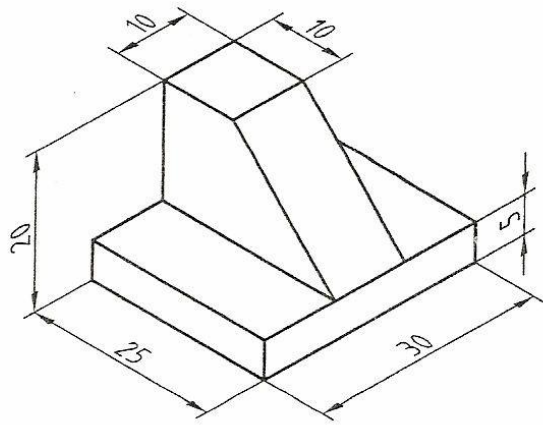
1) Delinear planta, alzado e perfil da peza dada.



2) Delinear planta, alzado e perfil da peza dada.

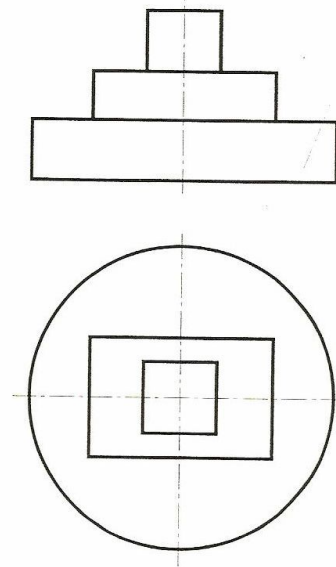
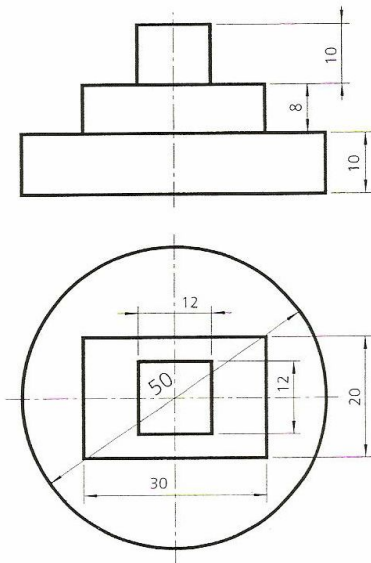


3) Delinear as vistas necesarias para definir a peza. Acoutar.



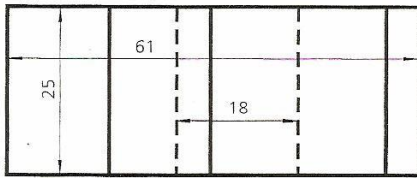
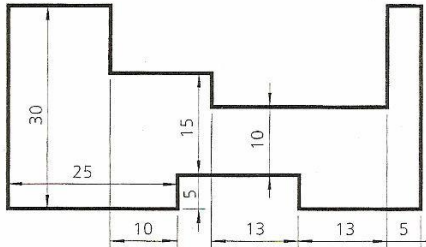


3

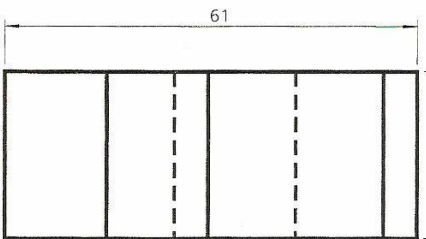
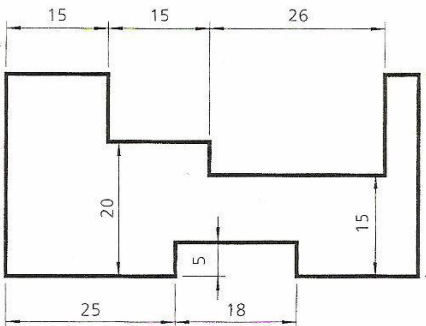


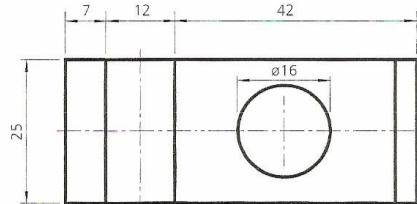
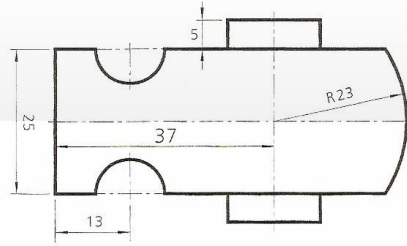
## EXERCICIO AUTOAVALIABLE: SECCIÓN 1 SOLUCIONARIO

1) Preséntanse tres corpos dados polas súas vistas diédricas: alzado e planta. Como exercicio de autocomprobación, trátase de localizar os erros de anotación que se cometeron ao dimensionar as vistas e volverlas a acoutar correctamente.

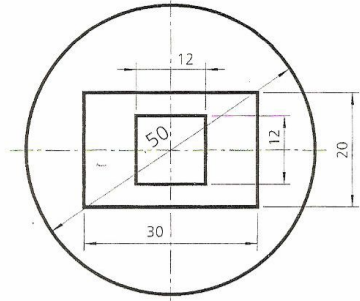
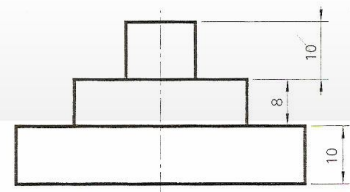


1





2



3

