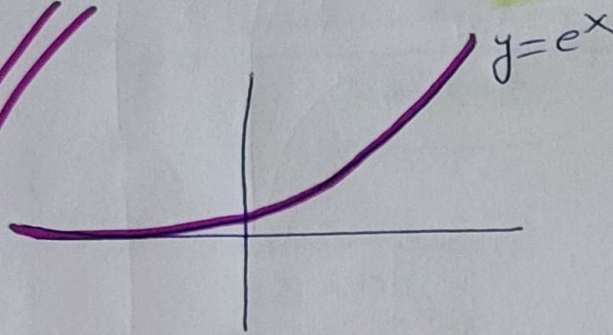


$$\textcircled{d} \lim_{x \rightarrow +\infty} \frac{e^x}{25 \cdot x^3} = \frac{+\infty}{+\infty} \text{ IND}$$

R. L'HÔPITAL



$$\lim_{x \rightarrow +\infty} \frac{e^x}{25 \cdot 3x^2} = \frac{+\infty}{+\infty} \text{ IND}$$

// L'HÔPITAL

$$\lim_{x \rightarrow +\infty} \frac{e^x}{75 \cdot 2x} = \frac{+\infty}{+\infty} \text{ IND}$$

// R. L'HÔPITAL

$$\lim_{x \rightarrow +\infty} \frac{e^x}{150} = +\infty$$