

LIGHTS, CAMERA, ACTION!

LEAD-IN: In pairs discuss the questions below. Can you think of a film which...?

- ★ made you roar with laughter?
- ★ made you cry your eyes out?
- ★ scared you to death?
- ★ sent you to sleep?
- ★ made you want to read the book it was based on?
- ★ made you want to visit the film location?

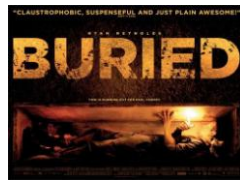
1. What's the difference between...?

cast and crew	feature film and short film	dubbed and subtitled	stunts and extras	shot and scene
---------------	-----------------------------	----------------------	-------------------	----------------

2. What is being defined?

1. A play or film in which part of the story is sung to music.
2. The total number of actors in a play or film.
3. The people who watch a play at the theatre (also people who see a film at the cinema).
4. What these people do with their hands at the end of a play at the theatre.
5. The person who makes a film.
6. a) Journalists who write articles about films and plays. b) The name of the articles they write.
7. The translation of the story of a film across the bottom of the screen.
8. To reserve tickets before the performance.
9. The most important actors or actresses in a film.

AN EXPERIMENTAL FILM: *BURIED* (2010)



You're going to watch the trailer of a highly experimental film: Rodrigo Cortés's *BURIED* (2010). Discuss the questions below:

- 1) Would you watch a film like this?
- 2) Which adjectives would you use to describe it? How do you think it makes viewers feel?
- 3) Does it remind you to the works of any other film maker?

1. Listen to the 1st part of a radio interview to Rodrigo Cortés about *BURIED* and say whether the statements below are TRUE or FALSE.

<http://www.bbc.co.uk/podcasts/series/film/all> October 1st MINUTE 19:51- 22:56

1. *BURIED* is essentially a war film.
2. There is only one location in the film.
3. Cinematic time is more important than real time in Cortés's opinion.
4. The protagonist's main enemy is the lack of air.
5. According to Cortés, *BURIED* is a film that disrupts your senses.
6. Producers advised Cortés not to include scenes outside the coffin.

2. Listen to the 2nd part of the interview and fill in the gaps with 1 or 2 words.

MINUTES 22:57-27:05

1. The elements Cortés considers are innovative in his movie are: not using..._____, building as many as..._____different boxes.
2. Cortés had some feelings of vertigo when he thought about shooting a 94-minute film inside a coffin but he ..._____those feelings and focused on the needs of every..._____.
3. He says that *Buried* is, using Hitchcockian terms, the..._____ McGuffin, because it's the..._____.
4. People feel committed with the character because they have experienced similar situations when they tried to change their..._____.
5. Mark Cousins thinks that Cortés's film is at least..._____than Hitchcock's films, but he criticizes the..._____because it reduces the resonance of the picture and its mystery.

KEY 1.

1-F, 2-T, 3-T, 4-F, 5-T, 6-F

2.

1. The elements Cortés considers are innovative in his movie are: not using... **common sense**, building as many as... **seven** different boxes.
2. Cortés had some feelings of vertigo when he thought about shooting a 94-minute film inside a coffin but he ... **stopped** those feelings and focused on the needs of every... **take**.
3. He says that Iraq is, using Hitchcockian terms, the... **mcguffin**, because it's the... **background**.
4. People feel committed with the character because they have experienced similar situations when they tried to change their... **cell-phone company**.
5. Mark Cousins thinks that Cortés's film is at least... **as good if not better** than Hitchcock's films, but he criticizes the... **political context** because it reduces the resonance of the picture and its mystery.

