

DESCRIBING GRAPHS, CHARTS AND TABLES

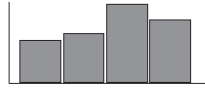
1. Organising the data

a) Label these charts with word from the box

line graph pie chart bar chart table



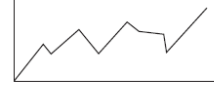
1 _____



2 _____

A	B	C
32	76	21
65	12	30
43	9	12

3 _____



4 _____

b) Fill in the gaps with one of the words from exercise a):

- _____ are used to show how the whole of something is divided into parts.
- _____ are mostly used to illustrate a development over a certain period of time.
- _____ are commonly used to compare the values of several items in a group at a certain point in time.
- _____ are arrangements of data in rows and columns.

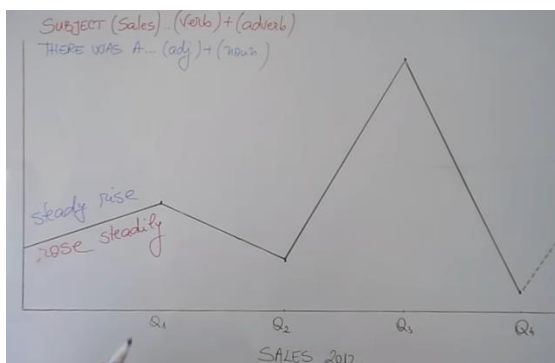
2. Describing graphs and trends

a) Match the words in bold with their definitions in the column on the right.

- | | |
|---|--|
| <p>1. The loss of status as many nations reserve currency may cause the dollar to plummet even further.</p> | <p>a. have the same value (negative connotation)</p> |
| <p>2. The White Army reached a peak of 100,000, compared with the Red Army, which had over three and a half million members in 1920.</p> | <p>b. fall quickly</p> |
| <p>3. As shown in table 3, in the distribution sector as a whole, output stagnated in the interwar period.</p> | <p>c. gradual increase over a period of time</p> |
| <p>4. After exercise, the pulse rate shot up to 110 bt the SpO₂ level remained constant at 98.</p> | <p>d. significant (possibly exponential) rise</p> |
| <p>5. Not only has the population increased, but so has China's economy, which has seen a steady rise between 1978 and 2006.</p> | <p>e. high point, maximum value</p> |
| <p>6. The strain within the gel increased dramatically to ≈ 40,000%.</p> | <p>f. have the same value (neutral positive connotation)</p> |

b) Now watch the video and write down all the collocations used to describe the graph.

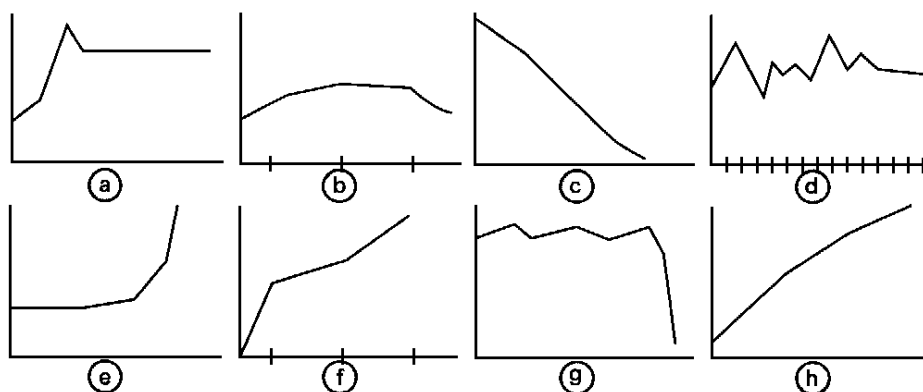
<https://www.youtube.com/watch?v=vEaObMGloE4>



Ex.

- Sales **rose steadily** / There was a **steady rise** in the sales.

c) Match each sentence below with one of the following graphs:

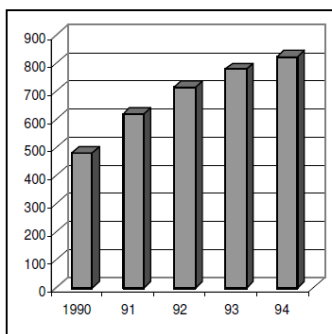


1. ☐ The investment level rose suddenly.
2. ☐ The sales of our products fell slightly in the final quarter.
3. ☐ The Research and Development budget has stabilized over the past few years.
4. ☐ At the end of the first year, sales stood at 50 per cent of the present level.
5. ☐ The price reached a peak before falling a little and then maintaining the same level.
6. ☐ There has been a steady increase in costs over several years.
7. ☐ The sudden collapse in share prices has surprised everyone.
8. ☐ The value of the shares has shown a steady decline.

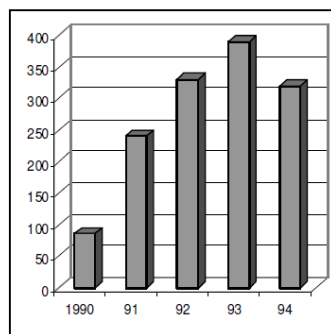


d) Read the reports on the sales results of different divisions of Sony and match each one to the correct graph.

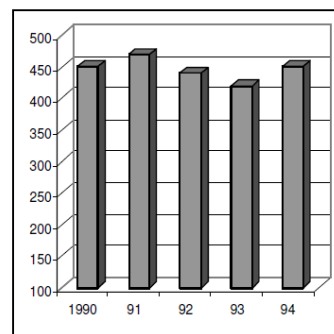
1. Music group sales went up slightly in 1991, then fell slightly in 1992 and 1993. But best-selling record releases by Michael Jackson, Billy Joel, Mariah Carey, Pearl Jam and many other artists led to recovery in 1994.
2. There was a Sharp increase in Audio Equipment sales in 1991 and another increase in 1992. But European market conditions were difficult in 1993 and 1994 and as a result sales fell.
3. Other sales increased steadily between 1990 and 1994 as a result of the strong performance of semiconductors, telephones and CD-Rom drivers.
4. There was a dramatic rise in Pictures Group sales in 1991 and sales continued to increase in 1992 and 1993. But the strong yen resulted in a fall in 1994. In fact, hit films such as Sleepless in Seattle and Philadelphia resulted in a rise in sales on a local currency basis in the US where we achieved a 19% market share.
5. Video Equipment sales rose up sharply in 1991 but then fell in 1992 and 1993. The decline in the camcorder market led to a further sharp drop in 1994.
6. Television sales went up in 1991 and continued to rise steadily until 1994 when they dropped slightly. This was in spite of the fact that sales of computer displays and wide-screen TVs were strong.



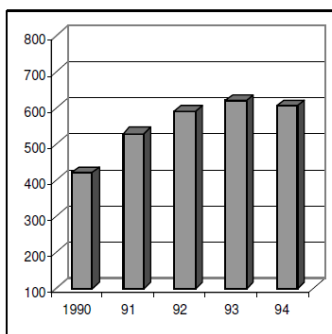
a



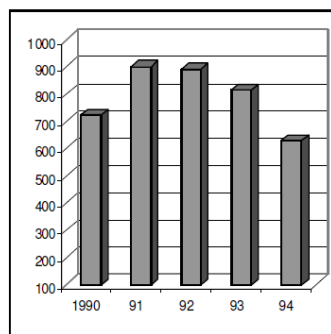
b



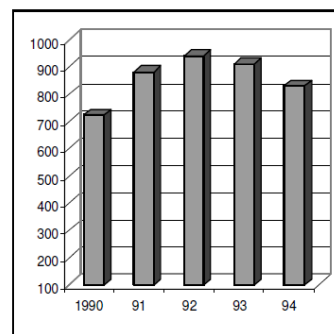
c



d



e



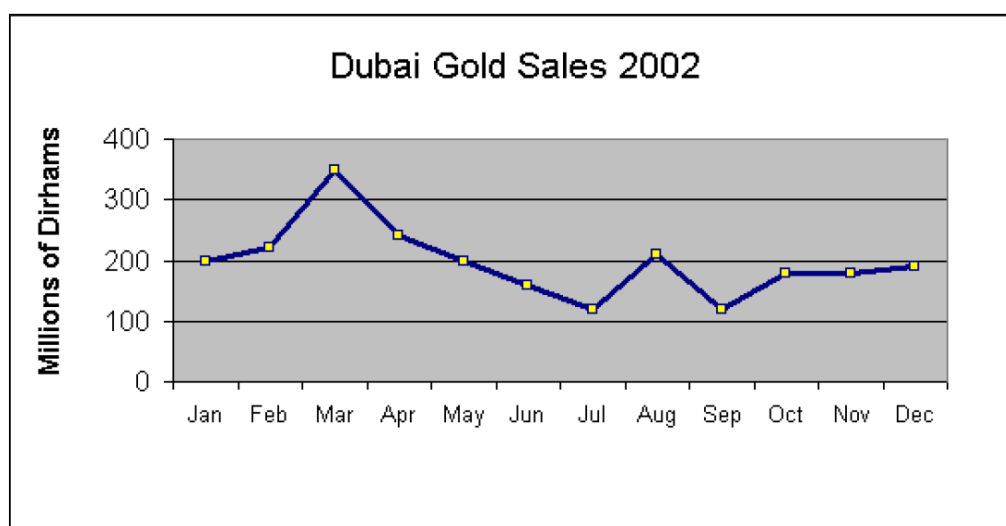
f

e) Choose the correct words in *italics* to complete the report

Sales results

Sales began the year at 30,000 units in January and increased *slight/slightly* to 32,000 units in February. There was a *sharp/sharply* rise *to/by* 38,000 in March *due/led* to the introduction of a new price discounting scheme. This was followed by a *slight/slightly* fall in April when sales dropped to 36,000 units. Our competitors launched a rival product in the spring and this resulted *in/from* a *dramatic/dramatically* fall to 25,000 in May. But we ran a summer advertising campaign and sales increased *steady/steadily* *to/by* 2,000 units a month throughout June, July and August until they stood *in/at* 33,000 in September. The *dramatic /dramatically* rise to 45,000 in October resulted *in /from* the launch of our new autumn range. But then we experienced problems meeting demand and sales fell *sharp/sharply* in November and remained *steady/steadily* *at/by* 39,000 in December.

f) Fill in the correct word



a low point declined doubled drop from increased slightly
recovered remained rising sharply sudden to were

In January, gold sales _____ about 200 million dirhams per month. In February they _____ to Dhs 220 million, _____ to a peak of 350 million dirhams in March. Over the next four months, sales _____ steadily, reaching _____ of 120 million dirhams in July.

In August, there was a _____ increase. Sales almost _____, rising _____ Dhs 120 million in July to Dhs 210 million in August. This was followed by a _____ in September to Dhs 120 million.

From September to October, sales _____ from Dhs 120 million to Dhs 180 million. In October and November, sales _____ steady, and there was a small increase in December _____ 190 million dirhams.

SUMMARY: Complete the tables with words from the box

Useful introductory expressions

clear depicts illustrates illustrated indicates seen shown

The graph shows/ _____ / _____ / _____ ...

From the graph it is _____ that ...

It can be _____ from the graph that ...

As can be _____ from the graph,...

As is _____ / illustrated by the graph,...

Introduction	Topic	Circumstances
This graph shows ...	the results of our products ...	over 10 years.
The diagram outlines ...	rates of economic growth ...	between 1990 and 1996.
This table lists ...	the top ten agencies ...	in the industrial world.
This pie chart represents	the company's turnover ...	for this year in our sector.
This line chart depicts ...	the changes in sales ...	over the past year.

Expressions to describe trends

an increase to grow an extension an expansion to rise a peak to decrease a fall
a plunge a decline a collapse a levelling-off a fluctuation stability a change

Upward movement

Downward movement

verbs	nouns	verbs	nouns
to increase			a decrease
	growth	to fall	
to extend		to plunge	
to expand		to decline	
	a rise	to collapse	
to reach a peak		to bottom out	

No movement

Change of direction

verbs	nouns	verbs	nouns
to stay constant	--	to level off	
to remain stable	--	to stop falling	
to stabilize		to remain steady	
to plateau	(to reach) a plateau	to fluctuate	

Notice that verbs and nouns can take different prepositions:

- Economic growth in the UK **fell by** 0.2% in the second quarter of 2010
- Spain enjoyed an **increase of** 10% in its tourist trade in 2007.

Degree of change

Speed of change

adjectives	adverbs	adjectives	adverbs
dramatic		rapid	
sharp		quick	
huge	--	sudden	
enormous		steady	
substantial		gradual	
considerable		slow	
significant			
slight			
moderate			

Proportions

A number of	A quarter of	Nearly all	Three out of seven
-------------	--------------	------------	--------------------

More than 50%	Fractions	Ratios	Synonymous words for "proportion"
_____	A half of ...	_____	_____
The best part of ...	A third of ...	Every second ...	A percentage of...
The bulk of ...	Two thirds of ...	Every fourth ...	
The lion's share of ...	_____		
	Three quarters of ...		
	A fifth of ...		

Giving your opinion

argued	arguments	balance	evidence	probable	seems	view
--------	-----------	---------	----------	----------	-------	------

It is likely/ _____ that ...

It _____ plausible that ...

The _____ indicates/ suggests that ...

It can/ could be _____ that ...

One possible _____ is that ...

On _____, it seems that ...

One of the main _____ in favour of (a change in the law) is...