

Connection between LOGO! 8 and computers/programming devices

Creating the physical connection

First you connect LOGO! with the PC. You can either connect them directly or by using a switch in case you want to operate LOGO! in a network. LOGO! ..8 comes equipped with an automatic cross-over detection and switches the ports, if necessary.



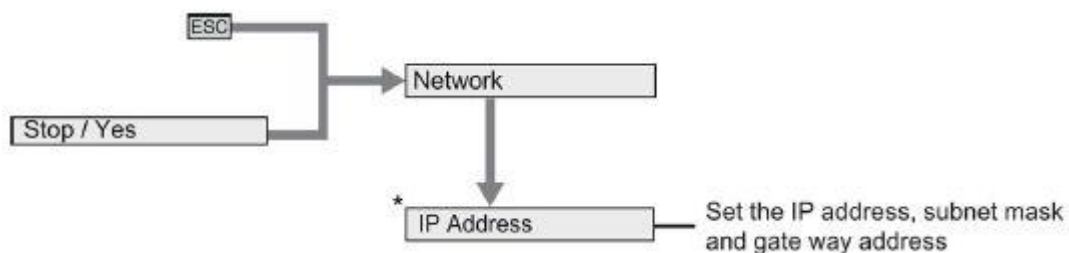
Notes:

To connect LOGO! 8 with a PC you need a standard Ethernet cable. The network communication between LOGO! 8 and the PC takes place via Ethernet only.

If your computer has only one Ethernet interface and if this interface is already in use, we recommend the use of USB to Ethernet adapters.

Addressing the devices

You need to ensure that all network settings have been made correctly for successful communication to take place.



Read out the IP address of LOGO!. Change to the menu and select the item Network; IP address. Here you set the required address. You can only change the address when the LOGO! is in STOP mode. (Example of an IP address: 192.168.0.10; Subnet mask: 255.255.255.0)

The default address is 192.168.0.1.

Then configure the network connection of your PC. Select the respective connection in the network connections (Start; Control Panel; Network and Internet; Network and Sharing Center ; Local Area Connection). Open the properties, select the Internet Protocol TCP/IP 4 and open the properties. Assign an additional IP address and a subnet mask that match the set LOGO! addresses. (Example of an IP address: 192.168.0.100; Subnet mask: 255.255.255.0) (see Figure 1).

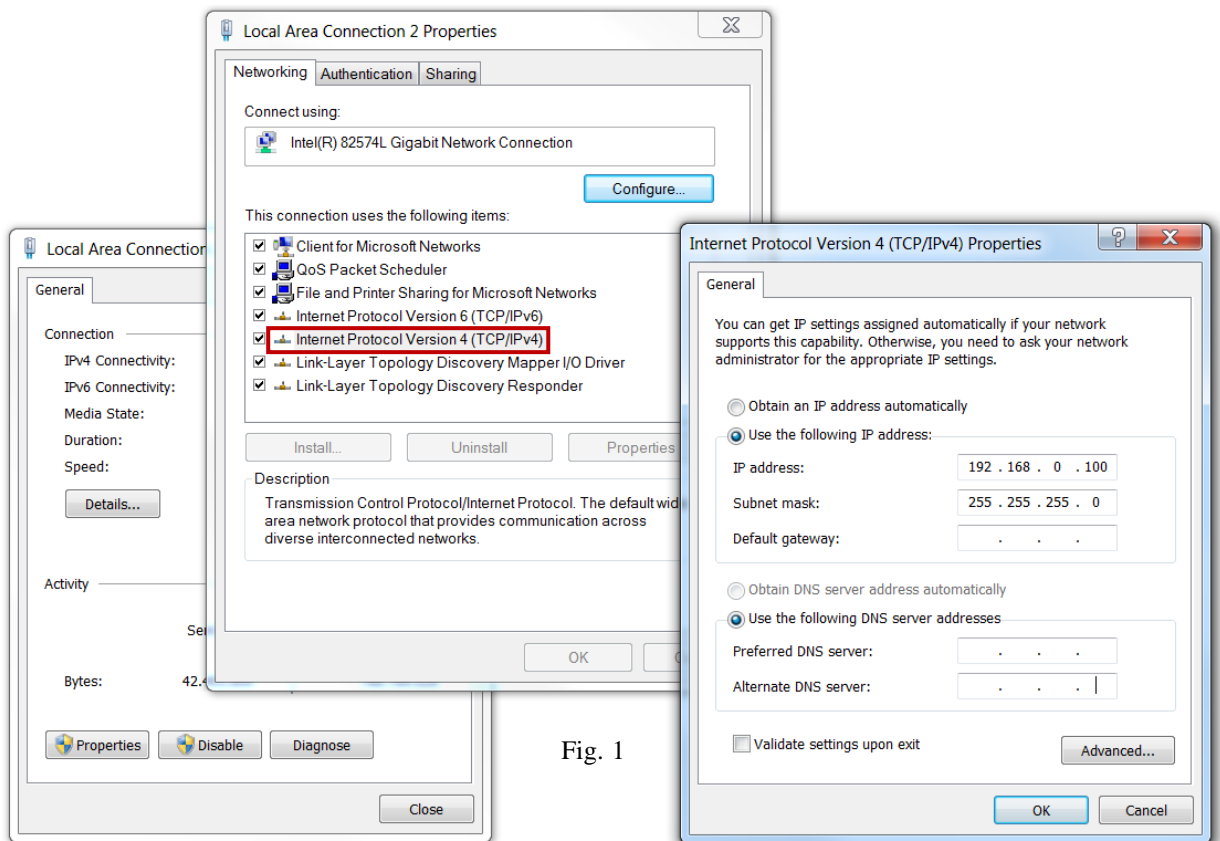


Fig. 1

Setting the connection in LOGO!Soft Comfort

Open LOGO!Soft Comfort. Then select File; Properties; Online settings. Enter the LOGO! address you want to use for the connection (see Figure 2).

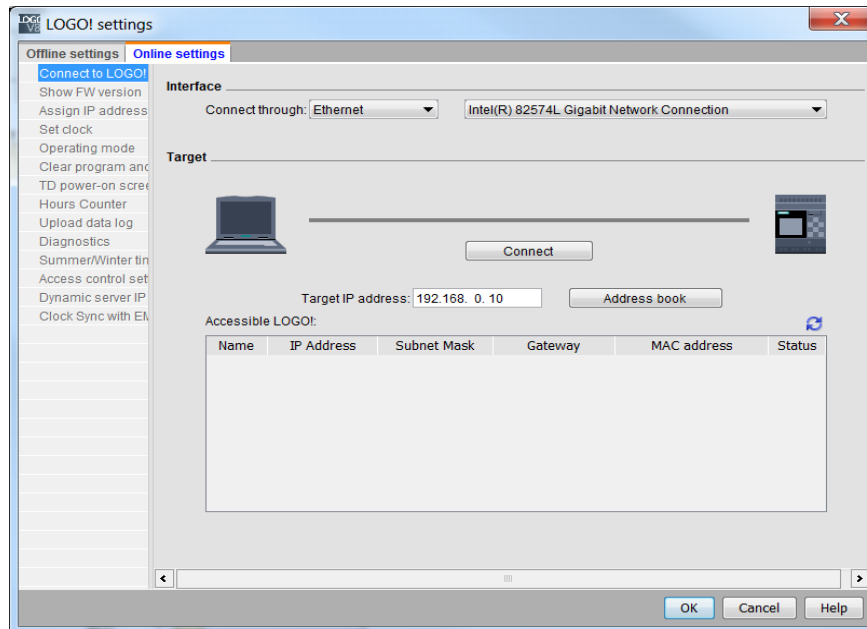


Fig. 2

Checking the connection

To verify if LOGO! is recognized on the PC, click the "Connect" button. If LOGO! is recognized by LOGO!Soft Comfort, you will see a checkmark and the connection will turn green. (see Figure 3).

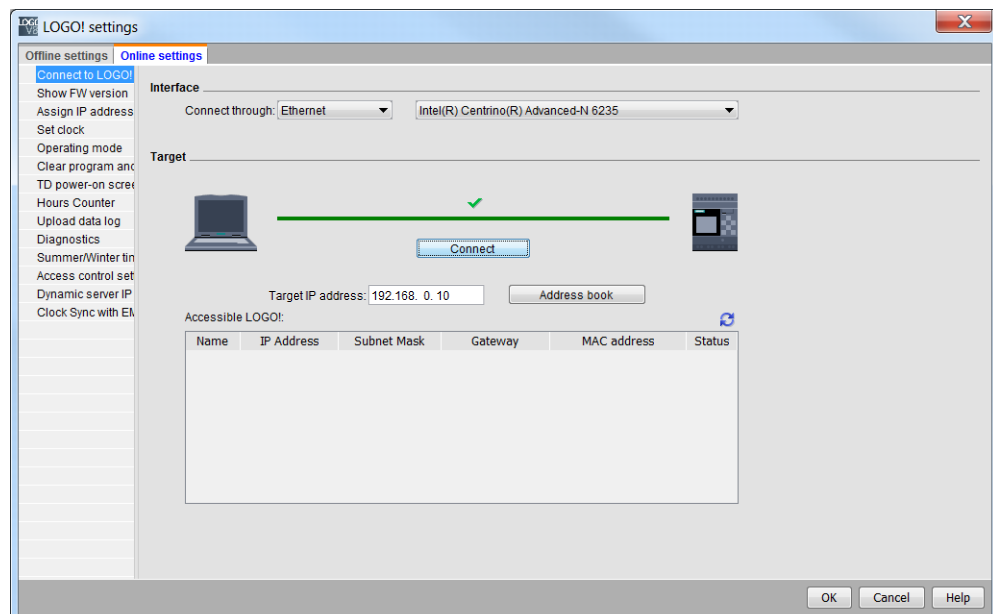


Fig. 3

You have successfully connected LOGO! with the PC and can now download and upload programs or make settings in LOGO! by using LOGO!Soft Comfort.