



ID. Cable: MARCO 010

Sumario de Pruebas: PASA

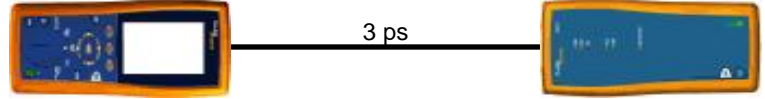
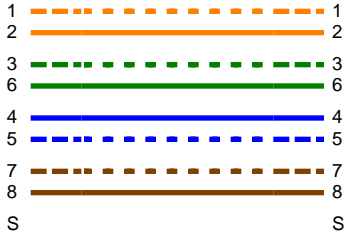
Fecha / Hora: 07/03/2019 09:50:06am
Paso Libre: -1.8 dB (NEXT 12-36)
Limite de Prueba: EN50173 PL Class E
 Tipo de Cable: Cat 6 UTP

Operador: 1
 Versión de Software: 2.4100
 Version de Limites: 1.6000
 NVP: 69.0%

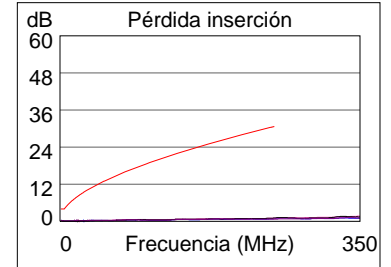
Modelo: DTX-TF6
 Principal N/S: 1532019
 Remoto N/S: 1532020
 Adaptador Principal: DTX-PLA002
 Adaptador Remoto: DTX-PLA002

Mapa de Cableado (T568B)

PASA

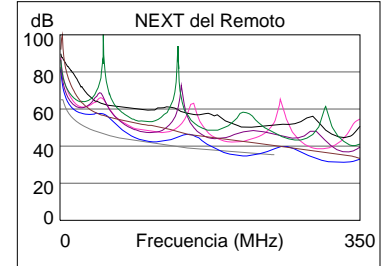
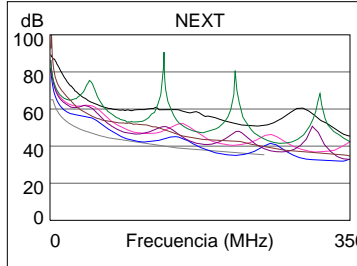


Longitud (ps)	[Par 12]	3
Tiempo de Prop. (ns), Lím. 498		5
Diferencia Retardo (ns), Lím. 44		1
Resistencia (ohm.), Lím. 21.0		0.5
Pérdida inserción Margen (dB)	[Par 45]	29.6
Frecuencia (MHz)	[Par 45]	250.0
Límite (dB)	[Par 45]	30.7

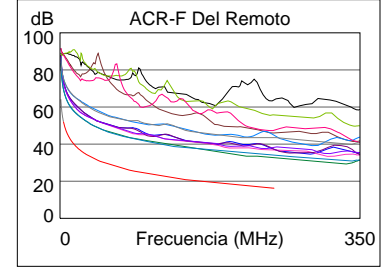
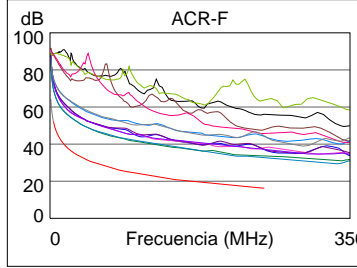


Margen de Peor Caso Valor de Peor Valor

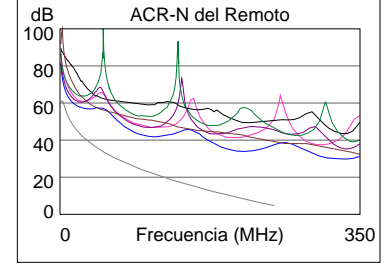
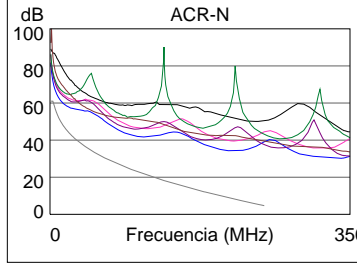
N/A	MAIN	SR	MAIN	SR
Peor Par	12-36	12-36	12-36	12-36
NEXT (dB)	-1.5	-1.8	-1.5	-1.8
Frec. (MHz)	207.5	207.5	212.5	212.5
Límite (dB)	36.7	36.7	36.5	36.5
Peor Par	12	12	12	12
PS NEXT (dB)	-0.1	0.0	-0.1	0.0
Frec. (MHz)	207.5	204.5	212.5	212.5
Límite (dB)	34.1	34.2	33.9	33.9



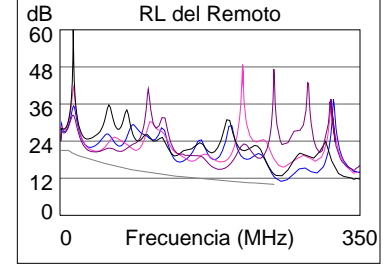
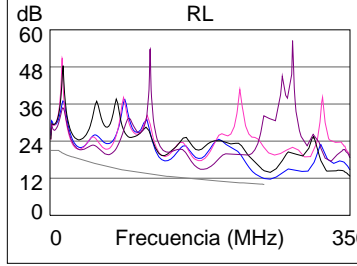
PASA	MAIN	SR	MAIN	SR
Peor Par	45-36	36-45	36-45	36-45
ACR-F (dB)	16.1	16.1	17.1	16.1
Frec. (MHz)	217.5	214.5	249.0	221.0
Límite (dB)	17.4	17.6	16.3	17.3
Peor Par	36	45	45	36
PS ACR-F (dB)	17.9	17.5	18.3	18.6
Frec. (MHz)	214.5	222.0	240.5	249.5
Límite (dB)	14.6	14.3	13.6	13.2



N/A	MAIN	SR	MAIN	SR
Peor Par	12-36	12-36	12-36	12-36
ACR-N (dB)	9.9	9.9	26.1	25.8
Frec. (MHz)	5.0	5.0	217.5	217.5
Límite (dB)	58.6	58.6	8.0	8.0
Peor Par	36	36	12	12
PS ACR-N (dB)	9.8	9.7	27.2	27.3
Frec. (MHz)	5.0	5.0	212.5	212.5
Límite (dB)	56.3	56.3	5.9	5.9



N/A	MAIN	SR	MAIN	SR
Peor Par	12	78	12	12
RL (dB)	1.9	2.4	1.9	2.5
Frec. (MHz)	249.5	35.0	249.5	250.0
Límite (dB)	10.0	18.3	10.0	10.0



Estándares de Red Compatibles:
 10BASE-T 100BASE-TX 100BASE-T4
 1000BASE-T ATM-25 ATM-51
 ATM-155 100VG-AnyLAN TR-4
 TR-16 Active TR-16 Passive