

ID. Cable: AAAA

Sumario de Pruebas: FALLO

Fecha / Hora: 07/02/2019 04:27:20pm

Paso Libre: -20.3 dB (NEXT 45-78)

Límite de Prueba: EN50173 Channel Class E

Tipo de Cable: Cat 6 UTP

Operador: 1

Versión de Software: 2.4100

Versión de Límites: 1.6000

NVP: 69.0%

Modelo: DTX-TF6

Principal N/S: 1532019

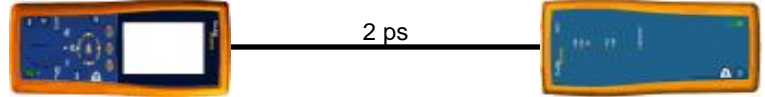
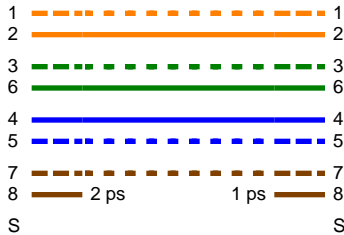
Remoto N/S: 1532020

Adaptador Principal: DTX-CHA002

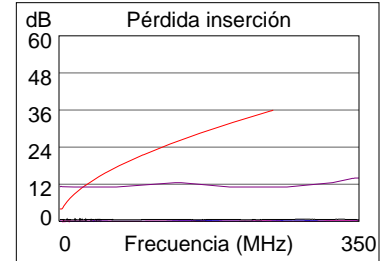
Adaptador Remoto: DTX-CHA002

Mapa de Cableado (T568B)

FALLO

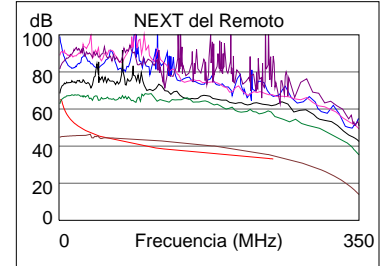
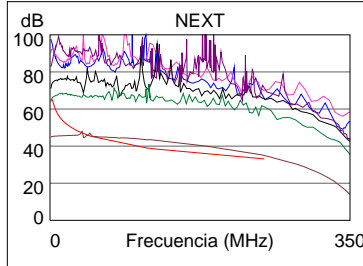


Longitud (ps)	[Par 78]	2
Tiempo de Prop. (ns), Lím. 555		5
Diferencia Retardo (ns), Lím. 50		2
Resistencia (ohm.), Lím. 25.0		Abierto F
Pérdida inserción Margen (dB)	[Par 78]	-7.3 F
Frecuencia (MHz)	[Par 78]	3.3
Límite (dB)	[Par 78]	4.0

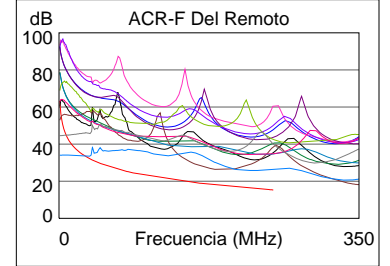
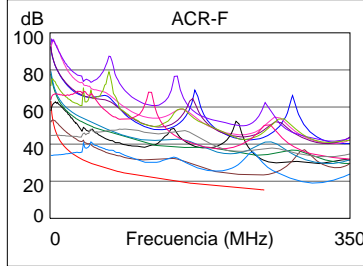


Margen de Peor Caso Valor de Peor Valor

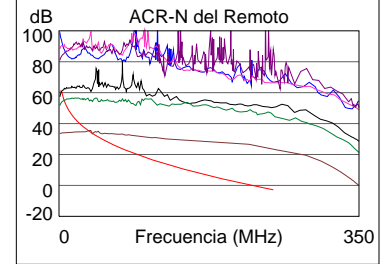
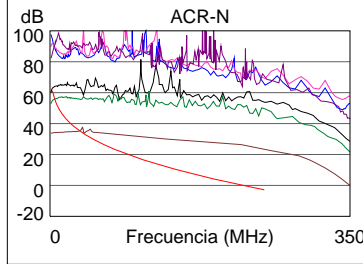
	MAIN	SR	MAIN	SR
FALLO				
Peor Par	45-78	45-78	45-78	45-78
NEXT (dB)	-20.1 F	-20.3 F	1.7	1.8
Frec. (MHz)	1.0	1.0	249.5	249.5
Límite (dB)	65.0	65.0	33.1	33.1
Peor Par	78	78	45	45
PS NEXT (dB)	-17.2 F	-17.4 F	4.6	4.7
Frec. (MHz)	1.0	1.0	249.5	249.5
Límite (dB)	62.0	62.0	30.2	30.2



	MAIN	SR	MAIN	SR
FALLO				
Peor Par	45-78	45-78	36-78	45-78
ACR-F (dB)	-29.3 F	-29.2 F	7.4	9.5
Frec. (MHz)	1.0	1.0	237.5	227.5
Límite (dB)	63.3	63.3	15.7	16.1
Peor Par	78	45	78	36
PS ACR-F (dB)	-26.4 F	-26.3 F	7.7	10.1
Frec. (MHz)	1.0	1.0	201.0	237.5
Límite (dB)	60.3	60.3	14.2	12.7



	MAIN	SR	MAIN	SR
FALLO				
Peor Par	45-78	45-78	45-78	45-78
ACR-N (dB)	-27.3 F	-27.4 F	26.1	26.2
Frec. (MHz)	1.1	1.0	249.5	249.5
Límite (dB)	61.0	61.0	-2.8	-2.8
Peor Par	78	78	78	78
PS ACR-N (dB)	-24.4 F	-24.5 F	29.0	29.1
Frec. (MHz)	1.1	1.0	249.5	249.5
Límite (dB)	58.0	58.0	-5.7	-5.7



	MAIN	SR	MAIN	SR
FALLO				
Peor Par	78	78	78	78
RL (dB)	-16.3 F	-16.3 F	-9.2	-9.4
Frec. (MHz)	4.1	3.3	109.5	107.0
Límite (dB)	19.0	19.0	11.6	11.7

