



ID. Cable: CARBON15

Sumario de Pruebas: PASA

Fecha / Hora: 07/02/2019 05:39:21pm

Operador: 1

Modelo: DTX-TF6

Paso Libre: 0.0 dB (NEXT 36-45)

Versión de Software: 2.4100

Principal N/S: 1532019

Límite de Prueba: EN50173 PL Class E

Versión de Límites: 1.6000

Remoto N/S: 1532020

Tipo de Cable: Cat 6 UTP

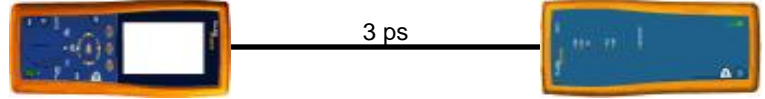
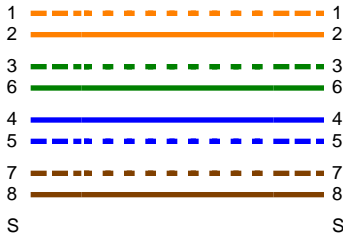
NVP: 69.0%

Adaptador Principal: DTX-PLA002

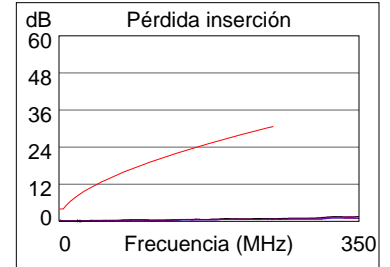
Adaptador Remoto: DTX-PLA002

Mapa de Cableado (T568B)

PASA

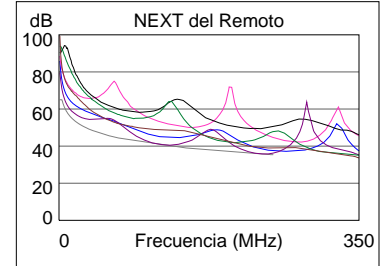
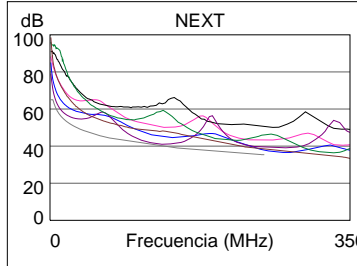


Longitud (ps)	[Par 12]	3
Tiempo de Prop. (ns), Lím. 498		4
Diferencia Retardo (ns), Lím. 44		0
Resistencia (ohm.), Lím. 21.0		0.4
Pérdida inserción Margen (dB)	[Par 36]	29.8
Frecuencia (MHz)	[Par 36]	250.0
Límite (dB)	[Par 36]	30.7

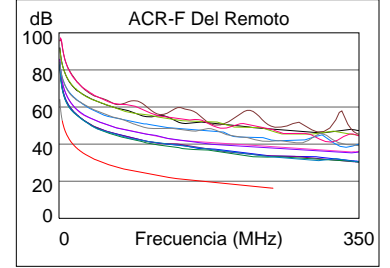
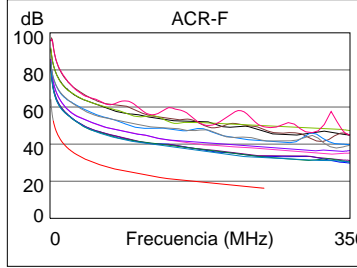


Margen de Peor Caso Valor de Peor Valor

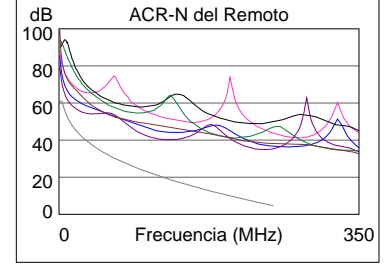
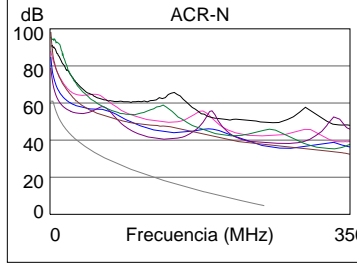
N/A	MAIN	SR	MAIN	SR
Peor Par	36-45	36-45	12-36	36-45
NEXT (dB)	0.9	0.0	2.4	0.0
Frec. (MHz)	123.5	232.5	249.5	235.0
Límite (dB)	40.4	35.9	35.4	35.8
Peor Par	36	36	36	36
PS NEXT (dB)	2.0	0.3	2.5	0.3
Frec. (MHz)	124.0	235.0	248.5	235.0
Límite (dB)	37.8	33.2	32.7	33.2



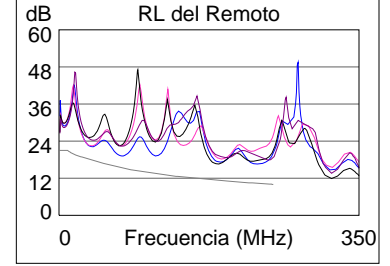
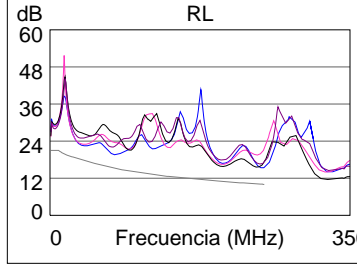
PASA	MAIN	SR	MAIN	SR
Peor Par	45-36	36-45	45-36	36-45
ACR-F (dB)	16.0	16.0	16.0	16.0
Frec. (MHz)	232.0	229.0	232.0	232.0
Límite (dB)	16.9	17.0	16.9	16.9
Peor Par	36	36	36	36
PS ACR-F (dB)	16.5	17.0	16.8	17.0
Frec. (MHz)	231.0	230.0	248.5	248.0
Límite (dB)	13.9	14.0	13.3	13.3



N/A	MAIN	SR	MAIN	SR
Peor Par	36-45	36-45	12-36	36-45
ACR-N (dB)	8.4	8.8	32.2	28.7
Frec. (MHz)	5.0	5.0	249.5	235.0
Límite (dB)	58.6	58.6	4.7	6.2
Peor Par	36	36	36	36
PS ACR-N (dB)	9.6	9.8	32.1	29.1
Frec. (MHz)	5.0	5.0	248.5	235.0
Límite (dB)	56.3	56.3	2.2	3.5



N/A	MAIN	SR	MAIN	SR
Peor Par	12	12	12	12
RL (dB)	4.4	3.8	5.2	6.1
Frec. (MHz)	38.5	70.5	247.0	229.5
Límite (dB)	18.1	15.5	10.1	10.4



Estándares de Red Compatibles:

10BASE-T	100BASE-TX	100BASE-T4
1000BASE-T	ATM-25	ATM-51
ATM-155	100VG-AnyLAN	TR-4
TR-16 Active	TR-16 Passive	