



Encontro internacional
Erasmus+ Ferrol
2023

Limerick (Ireland)

CFR FERROL - CEIP SAN XOÁN DE FILGUEIRA



CENTRO DE FORMACIÓN
E RECURSOS EDUCATIVOS
DE FERROL



Cofinanciado por la
Unión Europea



LIMERICK

**City located on the bank of
the river Shannon**

ITINERARY: ENGLISH

Aim: English language competence upgrade

Participants:

- Primary school teacher with English specialist pathway
- Early Years teacher

ENGLISH TRAINING CPD COURSE

**Mary Immaculate College
University of Limerick**

The focus of the English lessons was mainly placed on developing our oral competence.

- Diagnostic sessions to evaluate the group's language level.
- Getting to know each other activities, roleplaying, peer conversation tasks, etc.
- Final presentation highlighting an important aspect of the city.



Margaret Healy

English language teacher specialist at
the training course

GAELCHOLÁISTE LUIMNIGH

Gaelic Secondary School

All subjects are taught in Gaelic (Irish language), apart from the English subject.
Difficulties: finding teachers with proficiency level for Gaelic language.





Standard school facilities, but advanced learning resources

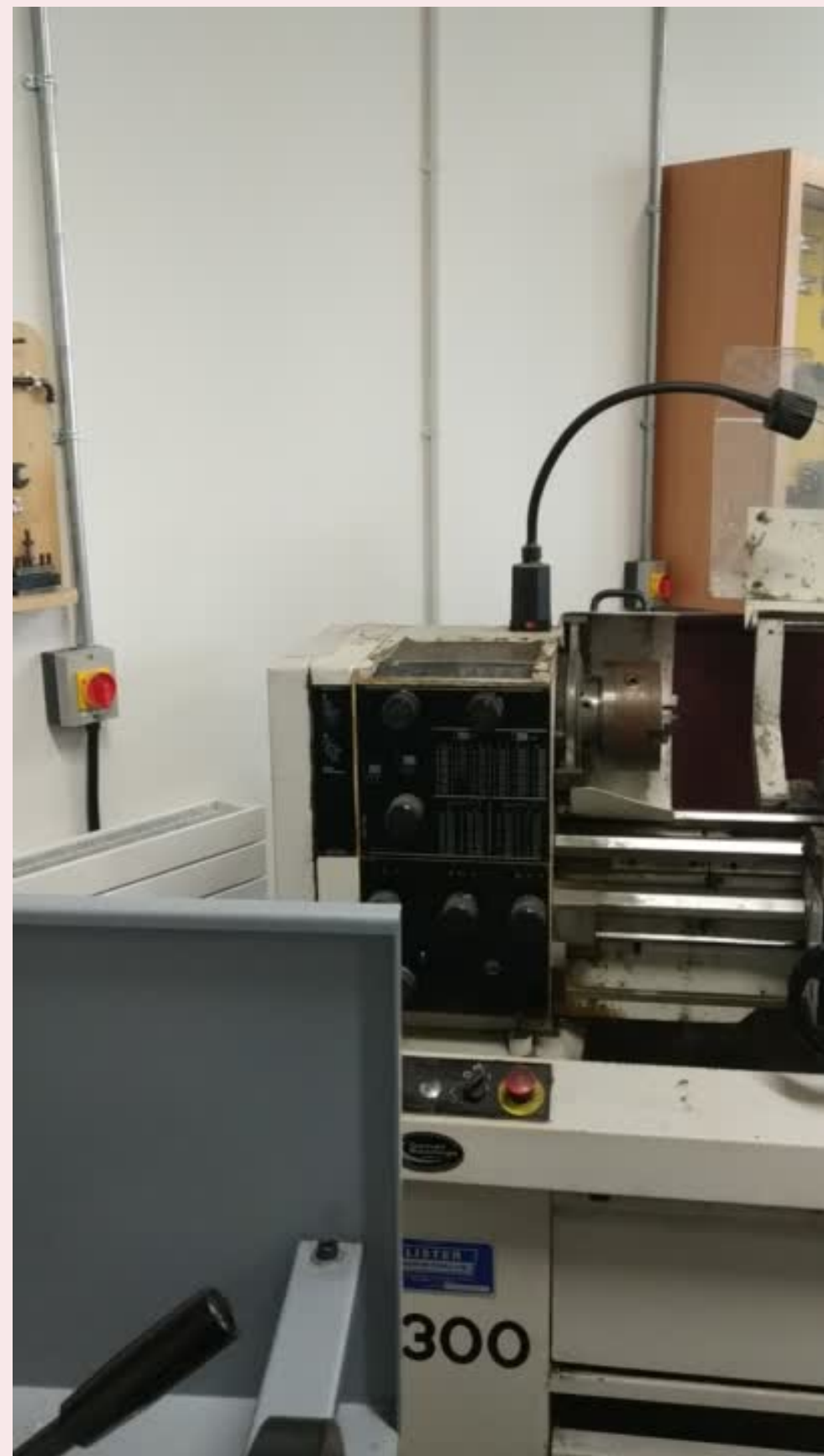
Every learner has an iPad. Bursary funds apply to those students from low income families.



COLÁISTE CHIARAN

Secondary School

Up-to-date and outstanding facilities.
The school building is brand new..





ERASMUS = INSIGHTS

It provides us with the opportunity to explore similarities and differences amongst ourselves and the host school in Ireland.

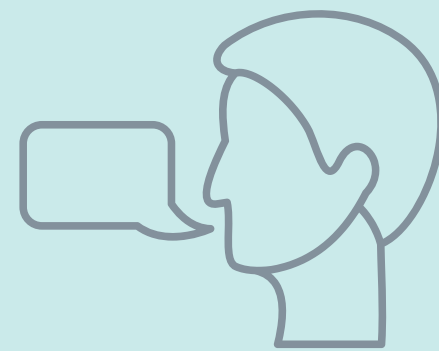
Highlight our strengths while finding new ways to enhance our own capabilities and overcome our weaker areas.

Similar linguistic contexts



GALICIAN

50% fluent
learners



IRISH

12% fluent
learners

Shaping political and linguistic policies to
restore these languages and their use.



Educational aspects

Building bridges of understanding between
cultures, languages and their people

Learners enrol in a year course that covers knowledge across different subject areas (science, humanities, etc.) before choosing their final specialist pathway.

Formal dress code amongst teachers. Learners refer to them as Mr or Mrs followed by their surname.

Religion is taught from a wider perspective (cultural approach).

MAIN DIFFERENCES

Irish Educational system vs Galician Educational system



EXPLORING THE CITY

King Jhon's Castle



Cliffs of Moher



We also enjoyed the delicious regional Irish cuisine

Bunratty Castle & Folkpark





María Leiras Bermúdez
marialeiras@edu.xunta.gal

Life-long learning



An insightful experience

CENTRO DE FORMACIÓN E RECURSOS
CEIP SAN XOAN DE FILGUEIRA

Erasmus Limerick



Thank you for your time