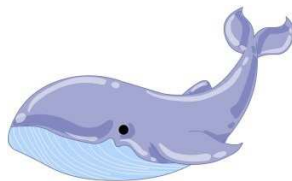
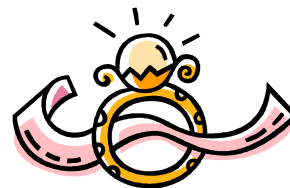


Palabras con LL









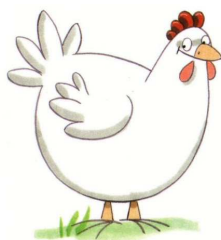










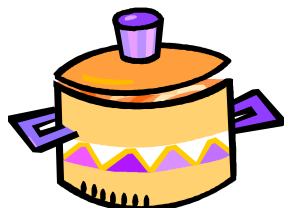




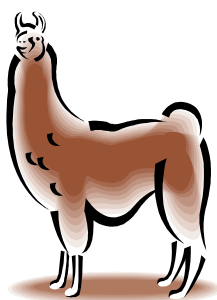


Palabras con LL

















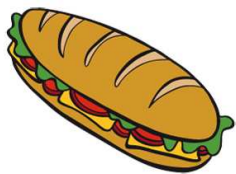








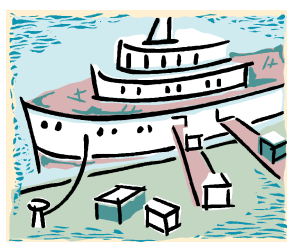
Palabras con LL

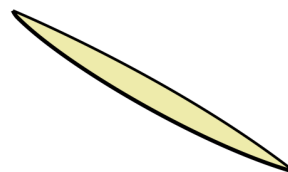


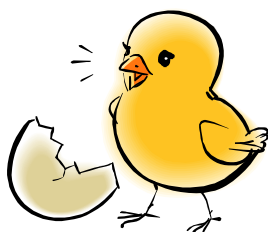


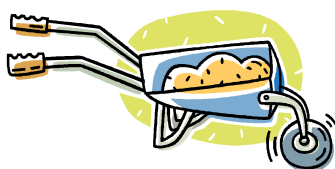




















Las palabras son:

cepillo ballena anillo
bellota pollo caballo
camello cebolla galletas
gallina gallo llama

sillón olla paella
llama lluvia sello
llora huellas silla
toalla cuchillo llave

bocadillo cerilla llavero
manzanilla muelle palillo
pollito carretilla ardilla
martillo sombrilla zapatillas